



# Annual Accounts 2009

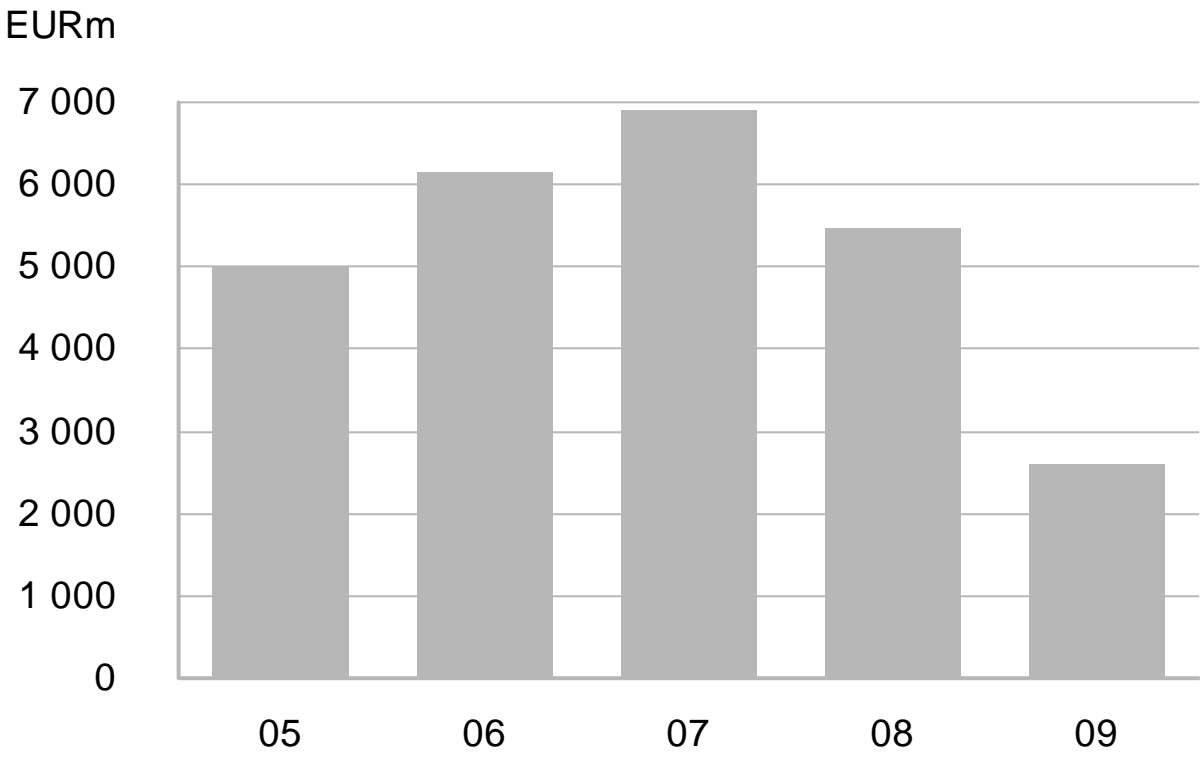
5-year diagrams

Metal prices

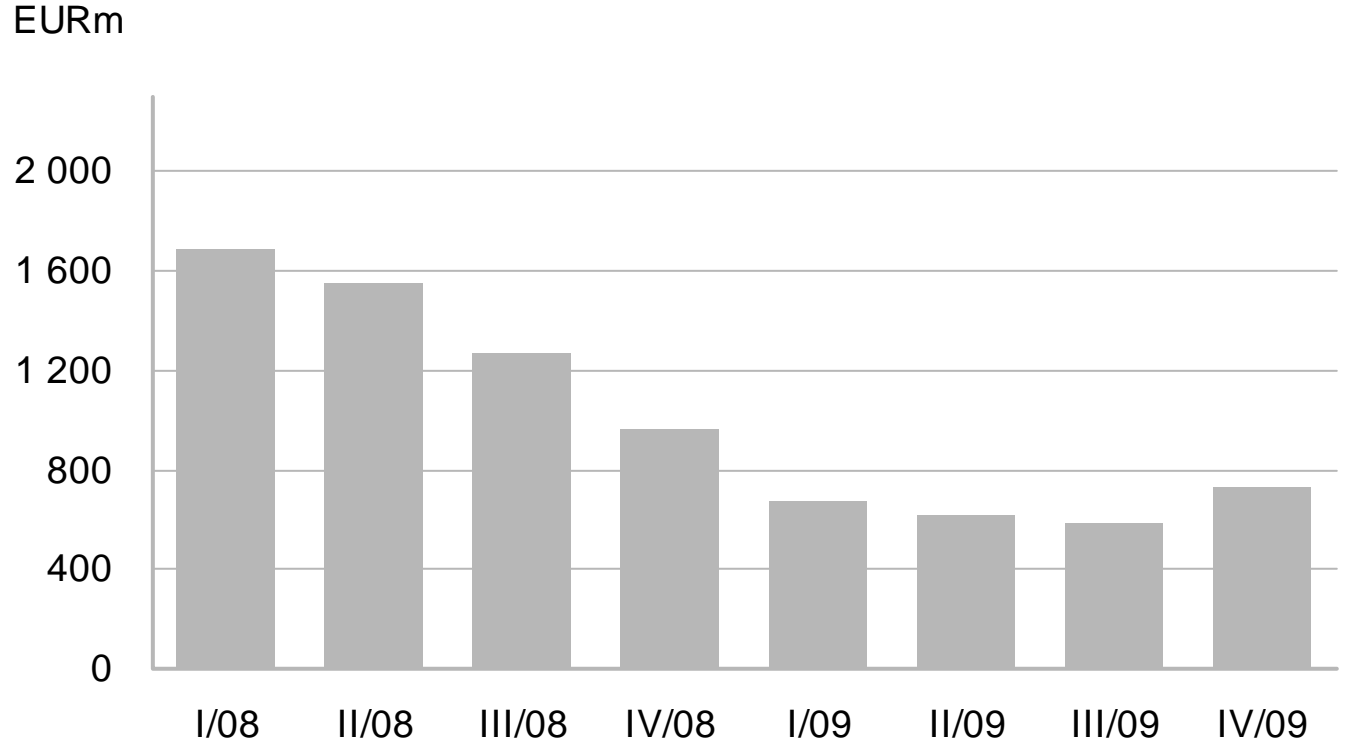
Share and ownership information

[www.outokumpu.com](http://www.outokumpu.com)

# Sales

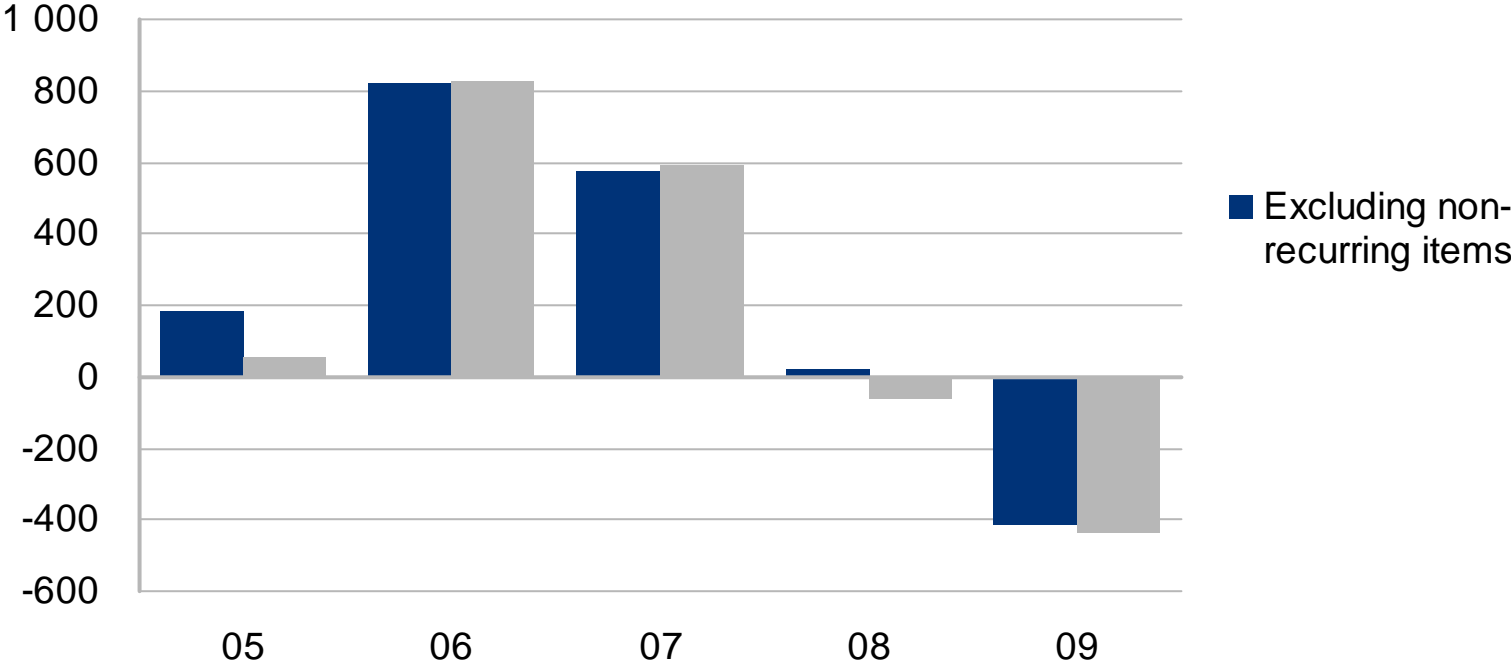


# Sales by quarter

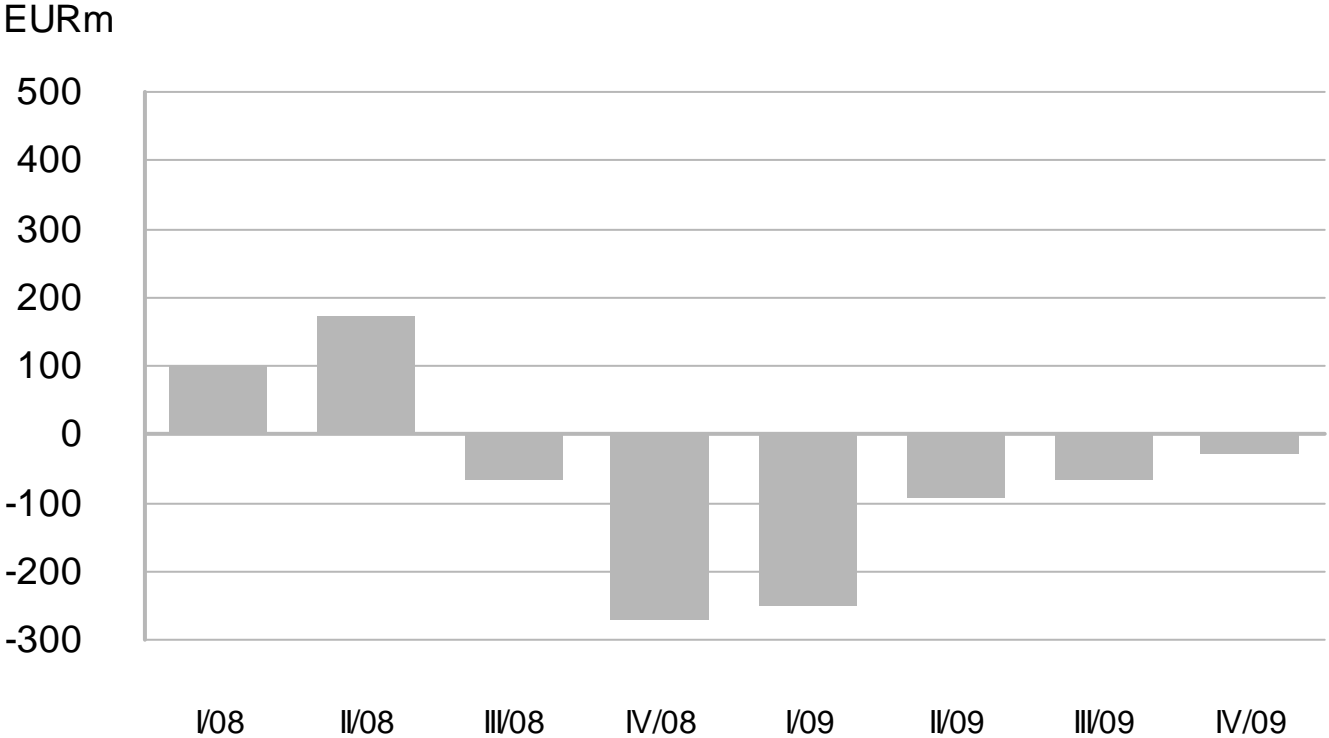


# Operating profit

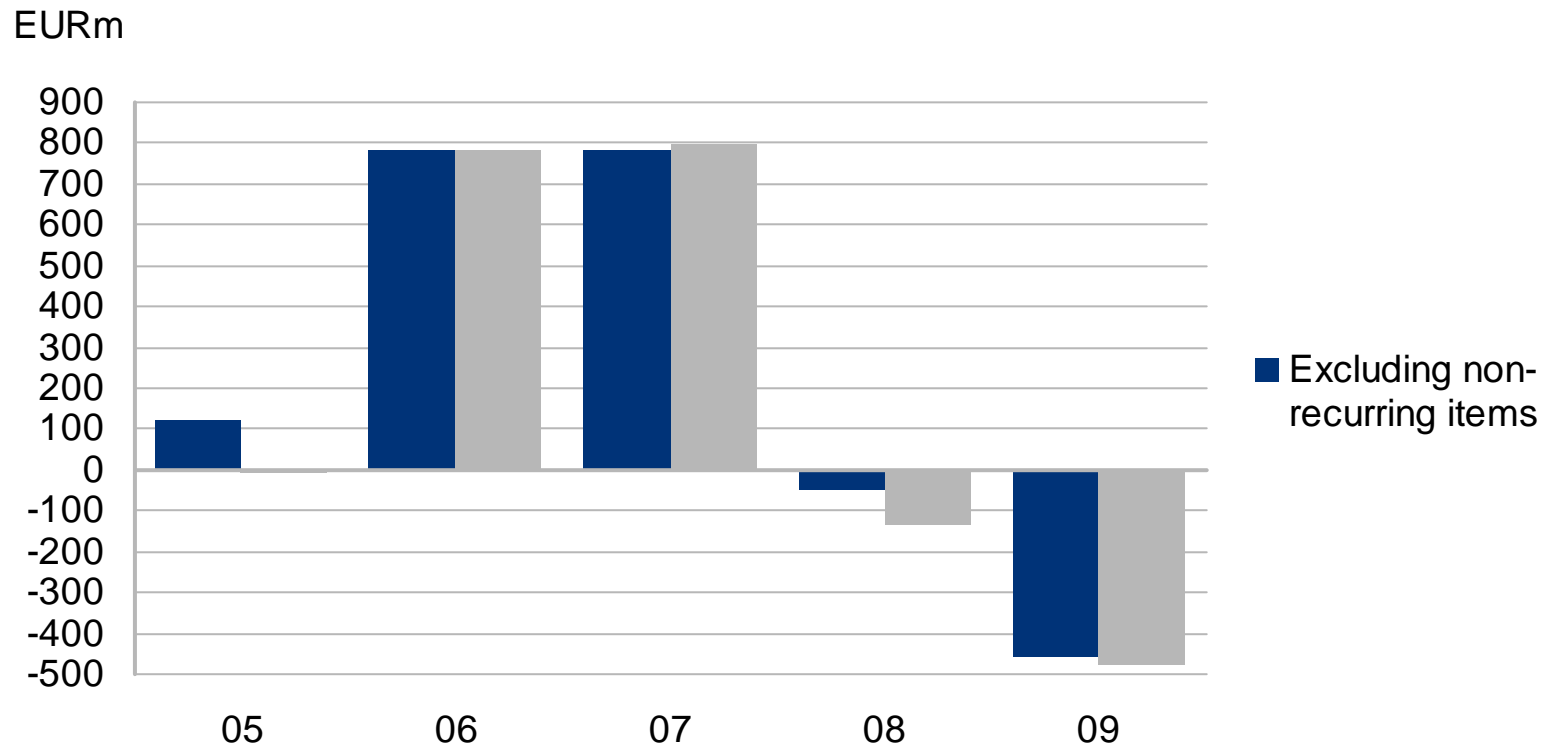
EURm



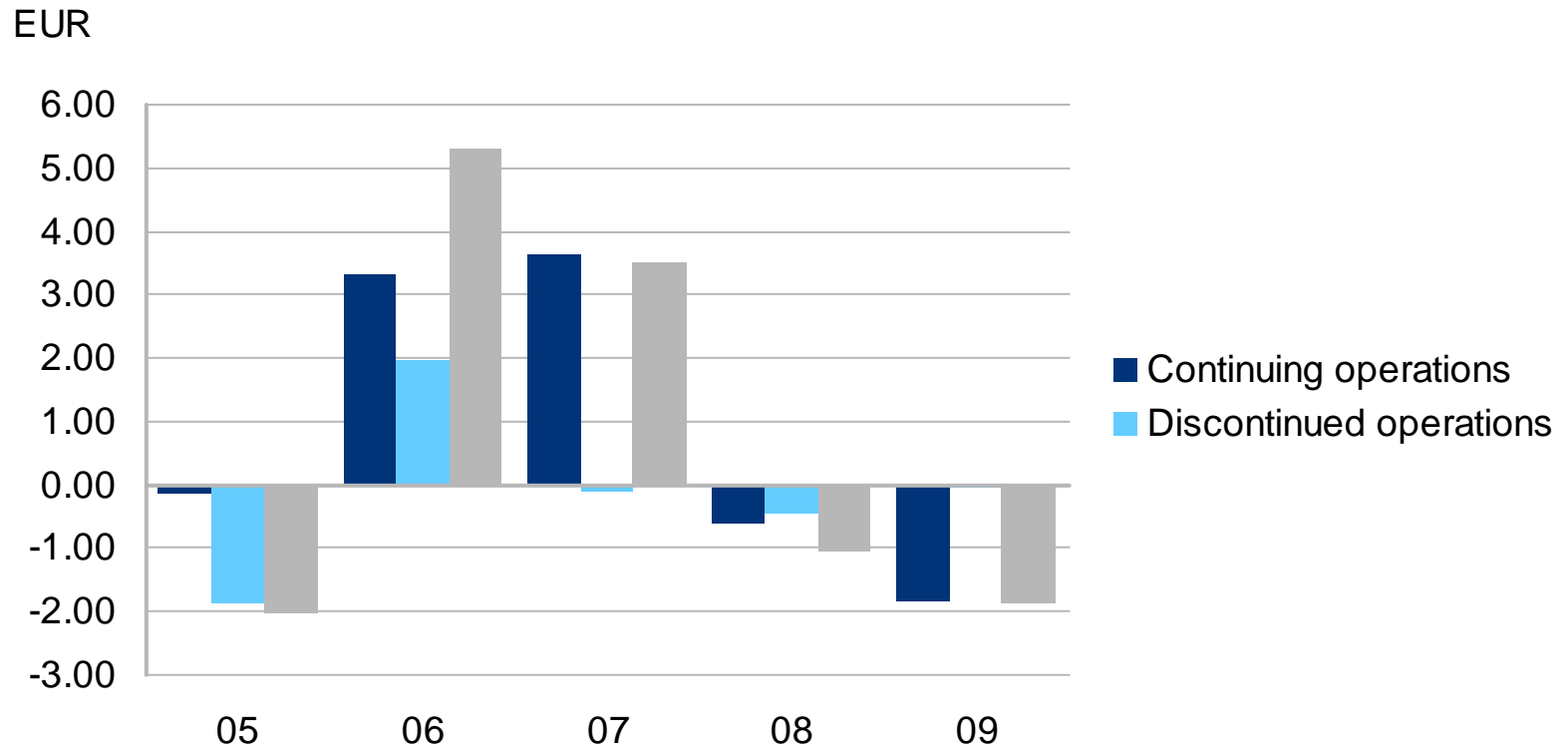
# Operating profit by quarter



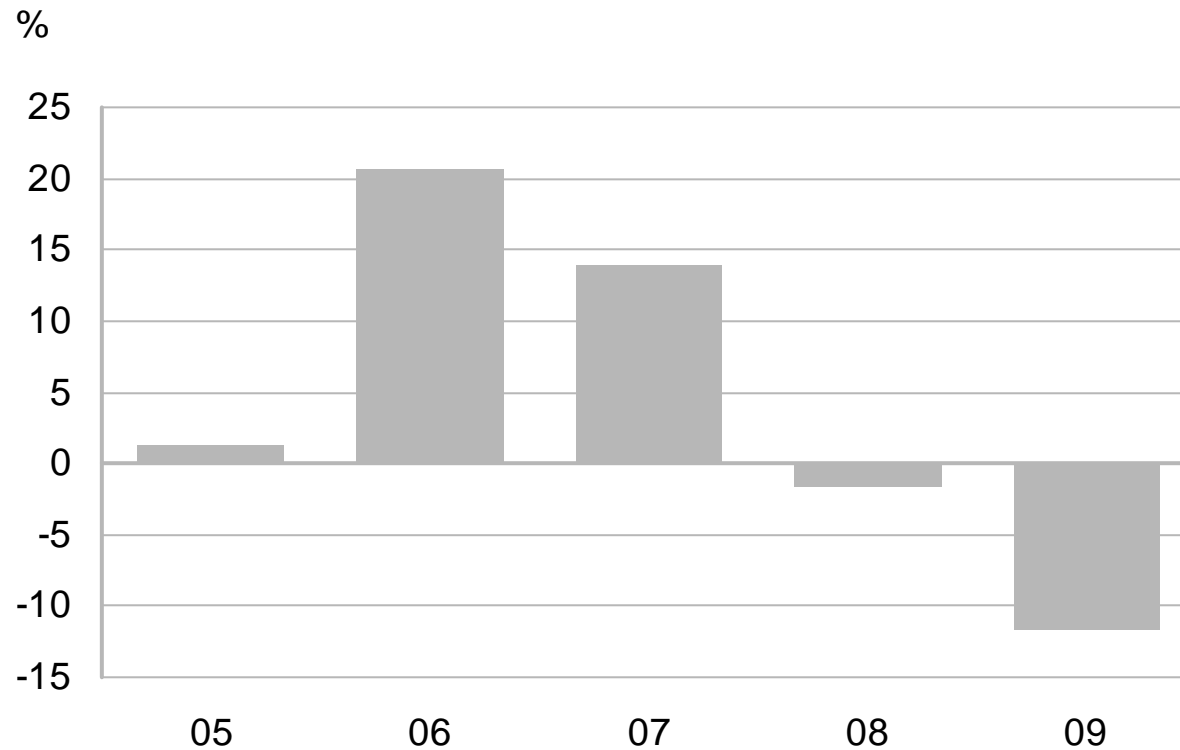
# Profit before taxes



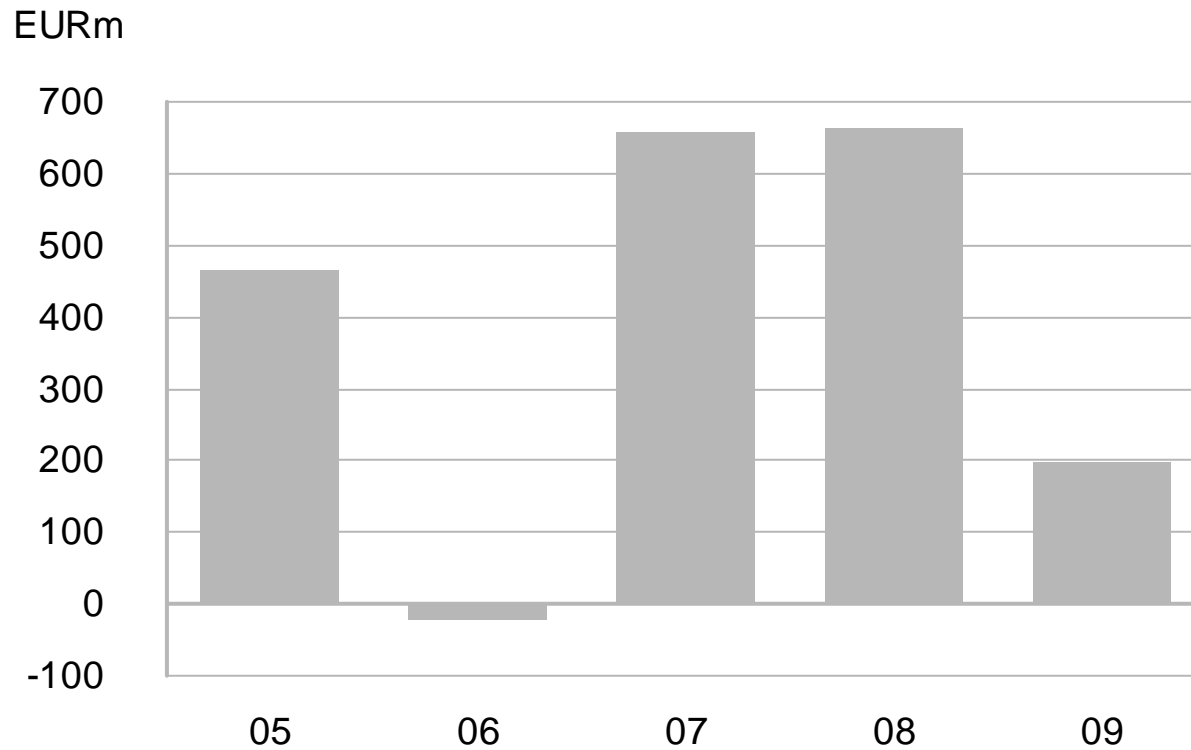
# Earnings per share



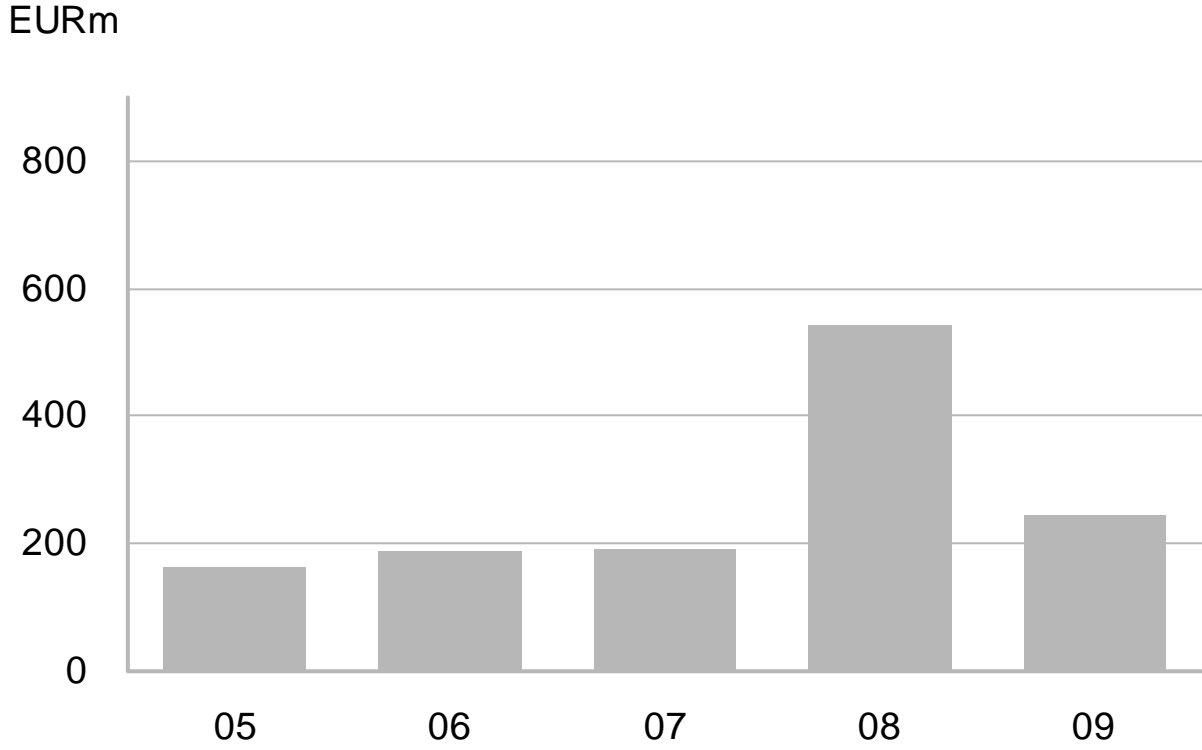
# Return on capital employed



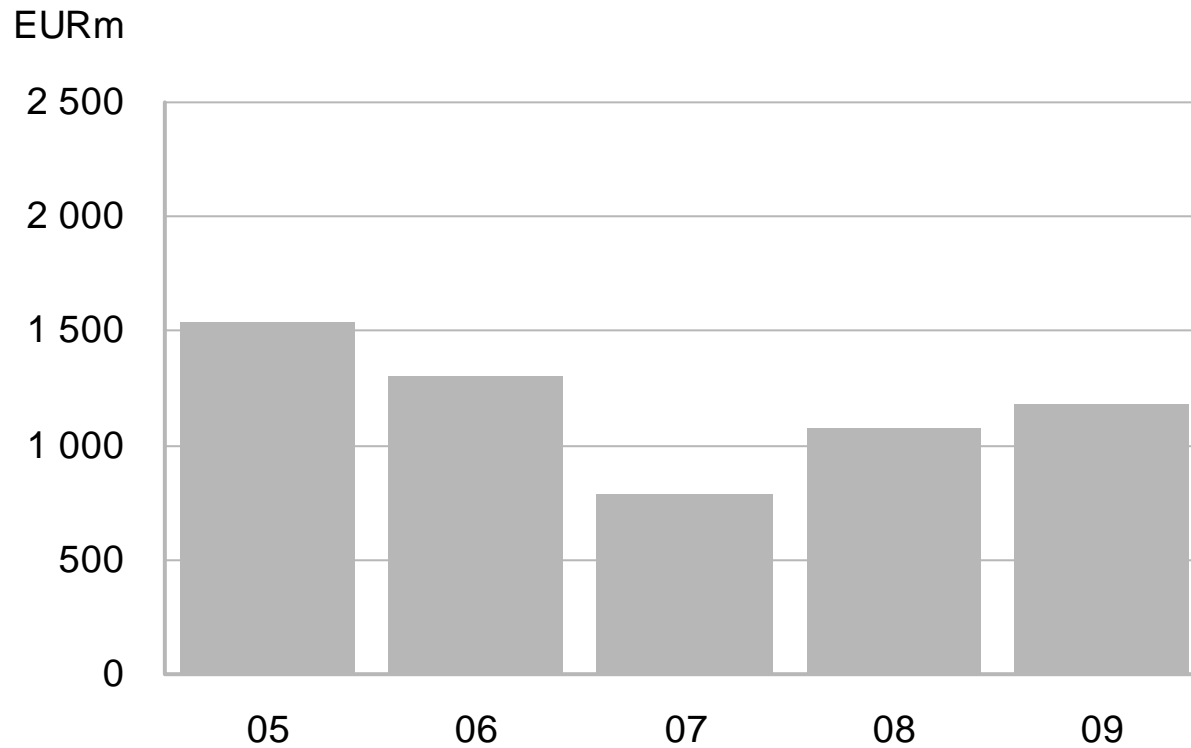
# Net cash from operating activities



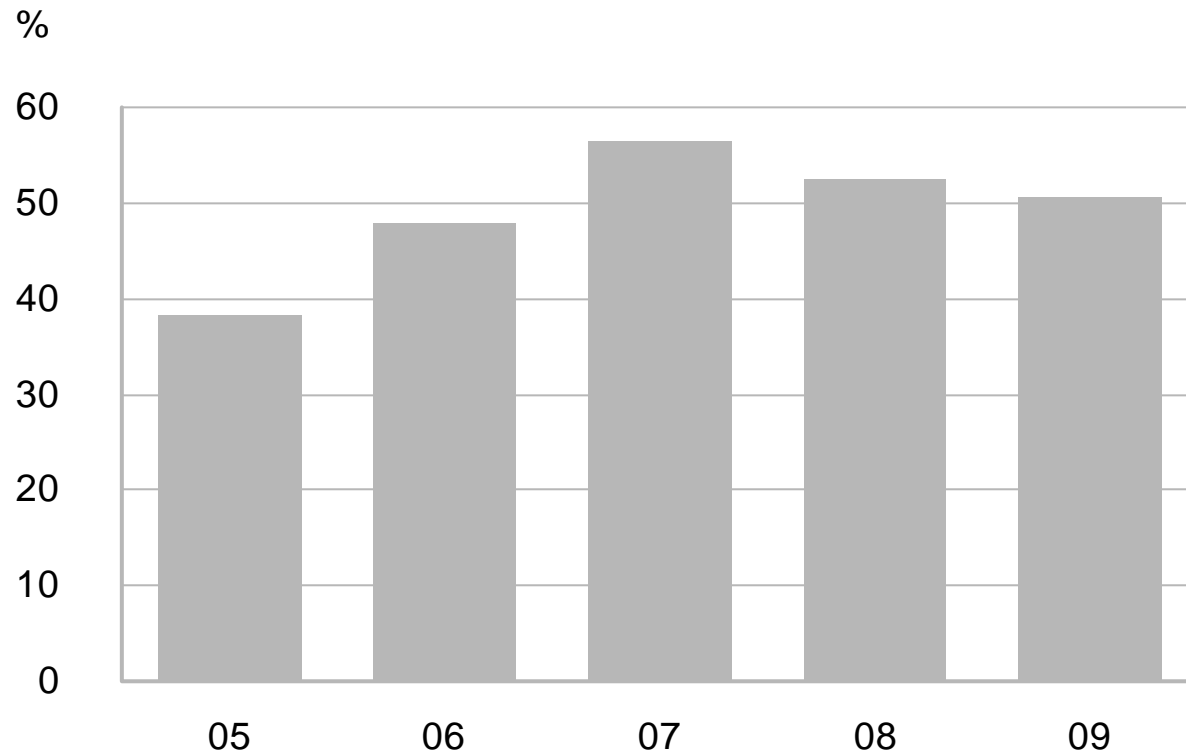
# Capital expenditure



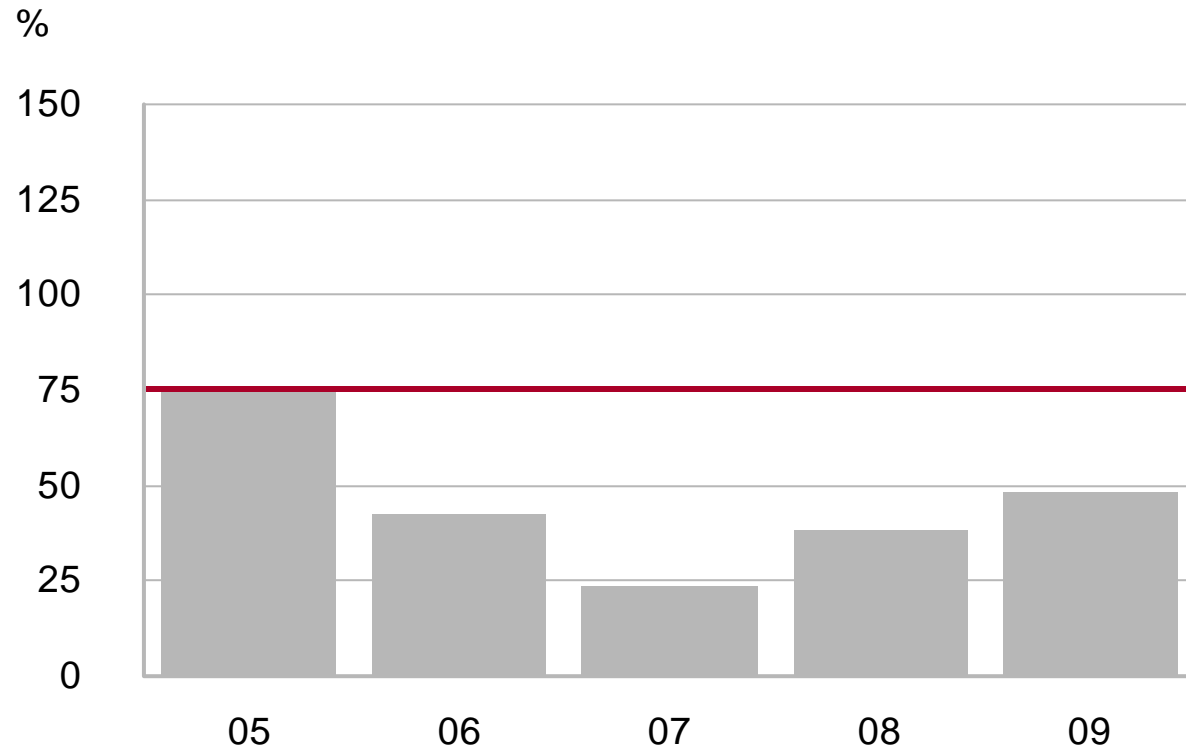
# Net interest-bearing debt



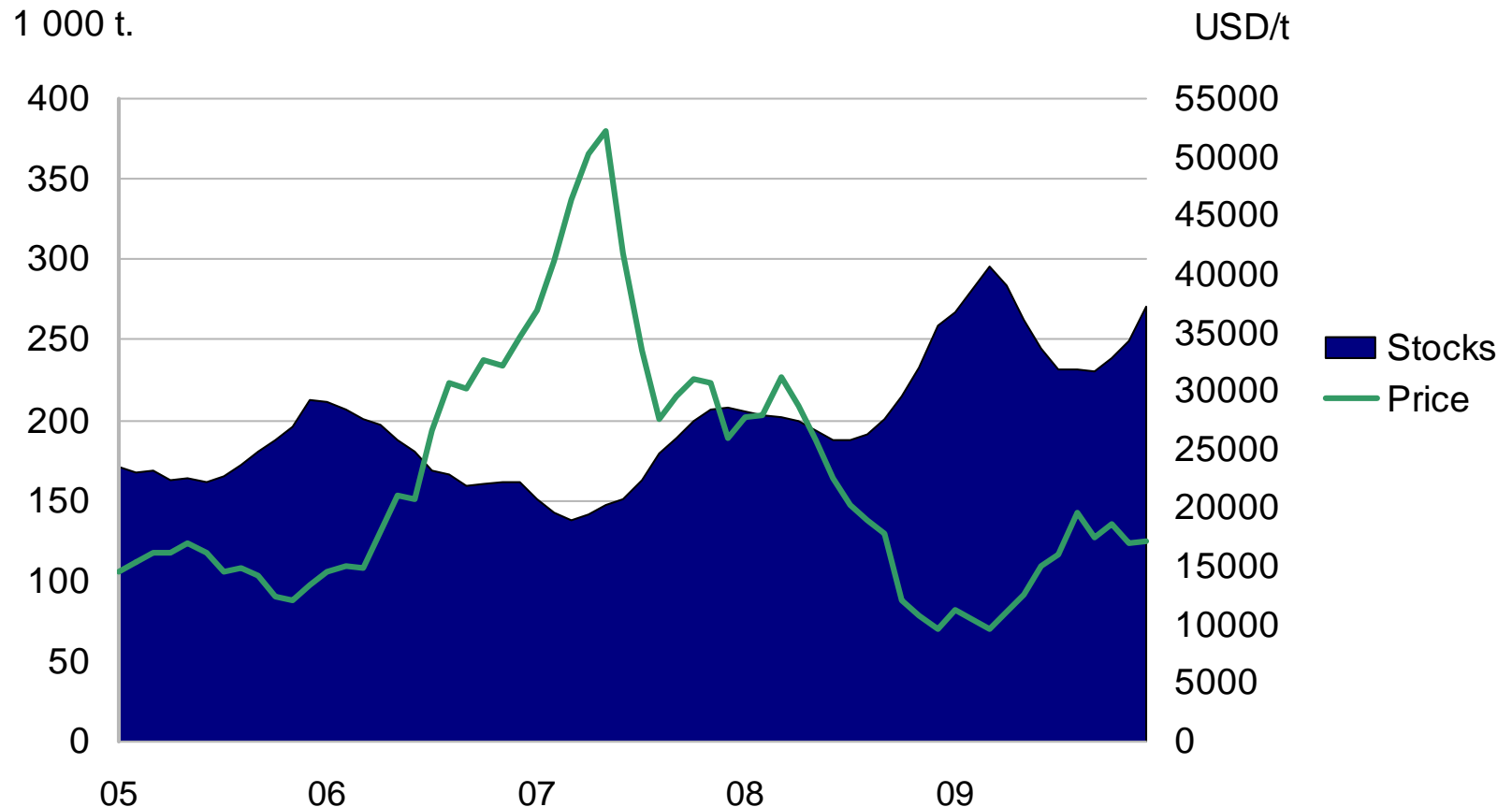
# Equity-to-assets ratio



# Debt-to-equity ratio



# Nickel price and total reported stocks



Source: CRU & LME

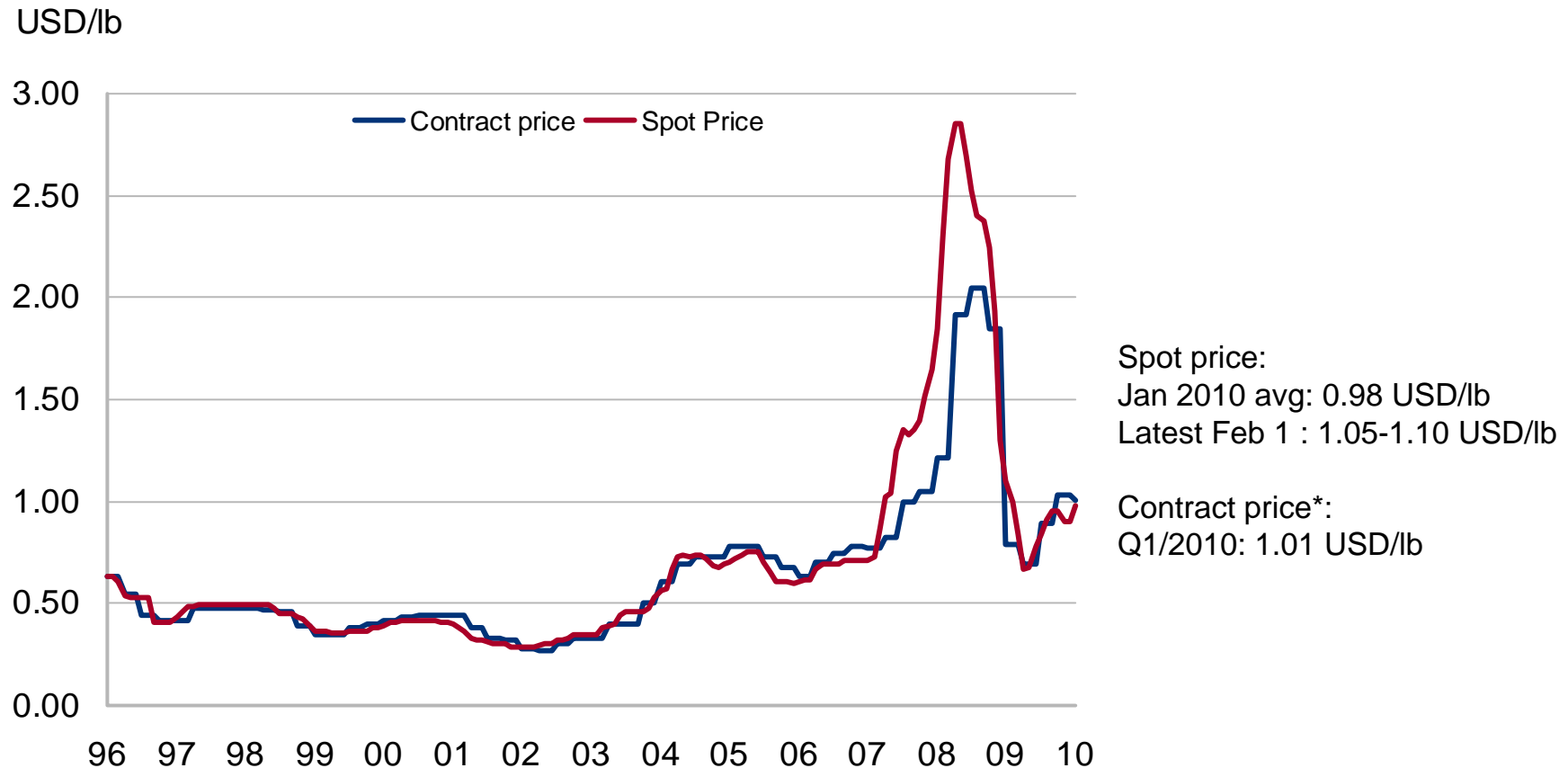
December 2009

# Nickel price development



Source: LME daily cash, up to and including Feb1, 2010

# Ferrochrome contract and spot prices



Source: Metal Bulletin. Spot prices are monthly averages – latest Feb 1 \*Contract prices are on a quarterly basis and the reference is the price agreed between South African ferrochrome producers and European buyers.

# Outokumpu share price development



**EUR**

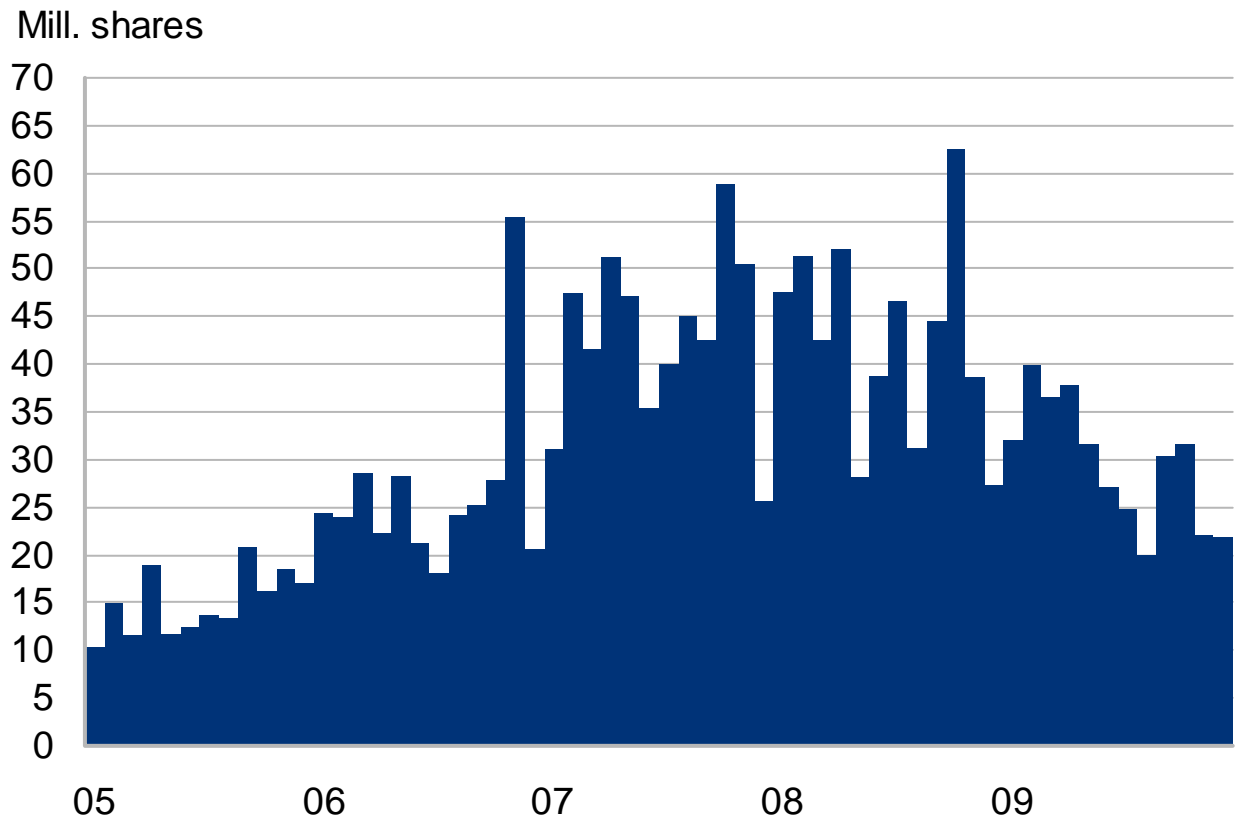


Source: Nasdaq OMX Helsinki, including December 30, 2009

**December 30, 2009:  
EUR 13.26**



# Trading volume of the share

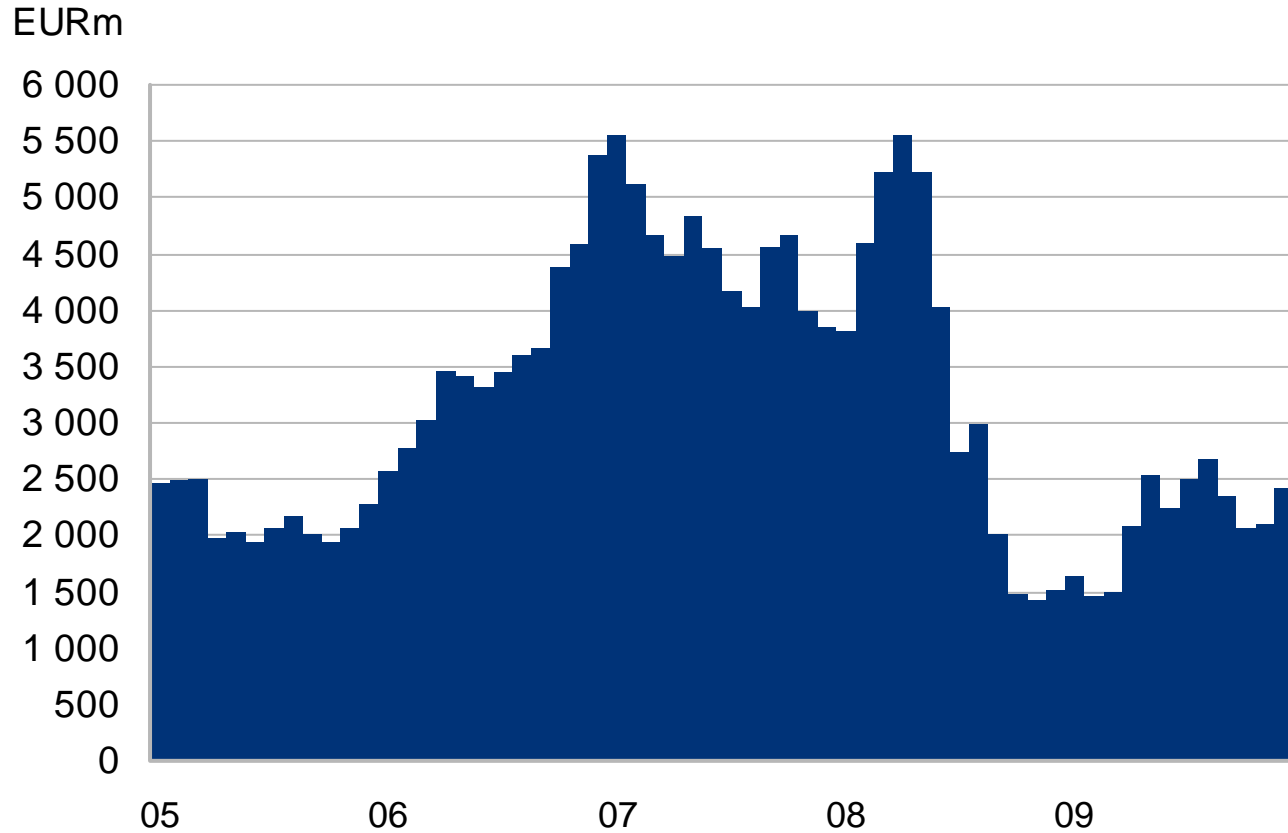


December 2009

Source: Nasdaq OMX Helsinki



# Market capitalisation



December 2009

Source: Nasdaq OMX Helsinki

# Ownership structure

on February 2, 2010

