

OUTO KUMPU



Pipe size OD, mm	Working pressure 20°C		Service load
	MPa	bar	
26,9 – 60,3	10,0	100	PN 100
76,1 – 133	4,0	40	PN 40
139,7 – 168,3	2,5	25	PN 25
205 – 255	1,6	16	PN 16

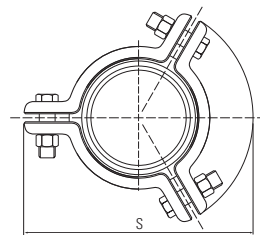
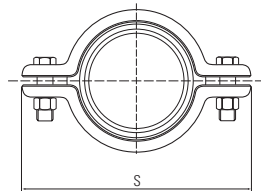
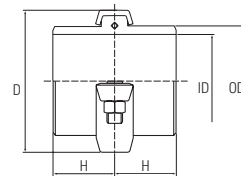
Union-L

A joint for quick assembly



Advantages in using Union-L

- low weight (L is for Light)
- exact joint alignment
- space saving
- leak proof
- O-ring gasket in different materials
- quick assembling and dismantling
- available as complete set



Union-L – Size range

Pipe size			Measures of Union-L, mm					Weight kg/piece	Bolt & nut mm	Complete from stock O-ring		Material of clamp, bolt & nut	
ISO, mm	ANSI, inch	Sch	OD	ID	D	H	S			Nitril	Teflon	EN 1.4301	carbon steel
26,9 x 2,3	3/4"	Sch 10S	26,9	22,3	42	20	72,5	0,19	6 x 30	x	x	x	
30 x 2			31	26	42	20	72	0,16	6 x 30	x	x	x	
33,7 x 2,6	1"	Sch 10S	34,2	28,5	48	25	80,5	0,24	6 x 30	x	x	x	
42,4 x 2,6	1 1/4"	Sch 10S	42,4	37,2	60	25	92,5	0,35	6 x 30	x	x	x	
44,5 x 2,9			46	38,7	60	25	82	0,34	6 x 30	x	x	x	
48,3 x 2,6	1 1/2"	Sch 10S	49	43,1	67	30	108	0,50	8 x 40	x	x	x	
54 x 2			54	50	76	30	116	0,62	8 x 40	x	x	x	
57 x 2,9			58	51,2	76	30	116	0,60	8 x 40	x	x	x	
60,3 x 2,9	2"	Sch 10S	60,3	54,5	84	30	131,5	0,85	10 x 50	x	x	x	
76,1 x 2,9			76,1	70,3	100	30	148	1,0	10 x 50	x	x	x	
84 x 2			84	80	109	30	162	1,1	10 x 50	x	x	x	
88,9 x 3,6	3"	Sch 10S	89	81,7	109	30	162	1,1	10 x 50	x	x	x	
104 x 2			104	100	131	30	188	1,6	12 x 65	x	x	x	
108 x 4			109	100	131	30	188	1,7	12 x 65	x	x	x	
114,3 x 3,6	4"	Sch 10S	114,3	107,1	142	35	204	2,3	12 x 65	x	x	x	
129 x 2			129	125	159	35	221	2,4	12 x 65	x		x	
133 x 4			134	125	159	35	221	2,5	12 x 65	x		x	
139,7 x 3,6*	5"	Sch 10S	141,3	132,5	167,5	35	230,5	2,6	12 x 65	x		x	
154 x 2*			154	150	188	35	251	3,0	12 x 65	x		x	
159 x 4,5*			160	150	188	35	251	3,2	12 x 65	x		x	
168,3 x 4*	6"	Sch 10S	170	160,3	198	35	266,5	3,7	12 x 65	x		x	
205 x 2,5*			205	200	252	35	315	7,1	20 x 100	x		x	
219,1 x 3,6*	8"	Sch 10S	220	211,9	258	40	330	7,9	20 x 75	x		x	
255 x 2,5*			255	250	308	40	383	11,1	22 x 110	x		x	

* 3 clamps.

Flanges and clamps have a traceable steel marking.

Stock standard: EN 1.4404

Outokumpu is an international stainless steel company. Our vision is to be the undisputed number one in stainless, with success based on operational excellence. Customers in a wide range of industries use our metal products, technologies and services worldwide. We are dedicated to helping our customers gain competitive advantage. Outokumpu Stainless Tubular Products manufactures and sells welded stainless steel tubes, pipes and fittings.

OUTOKUMPU

Outokumpu Stainless Tubular Products

SE-660 60 Molkom, Sweden

Tel: +46 (0)553 311 00

Fax: +46 (0)553 311 99

www.outokumpu.com/ostp