

# OUTO KUMPU



## Annual Accounts 2007

**5-year diagrams**

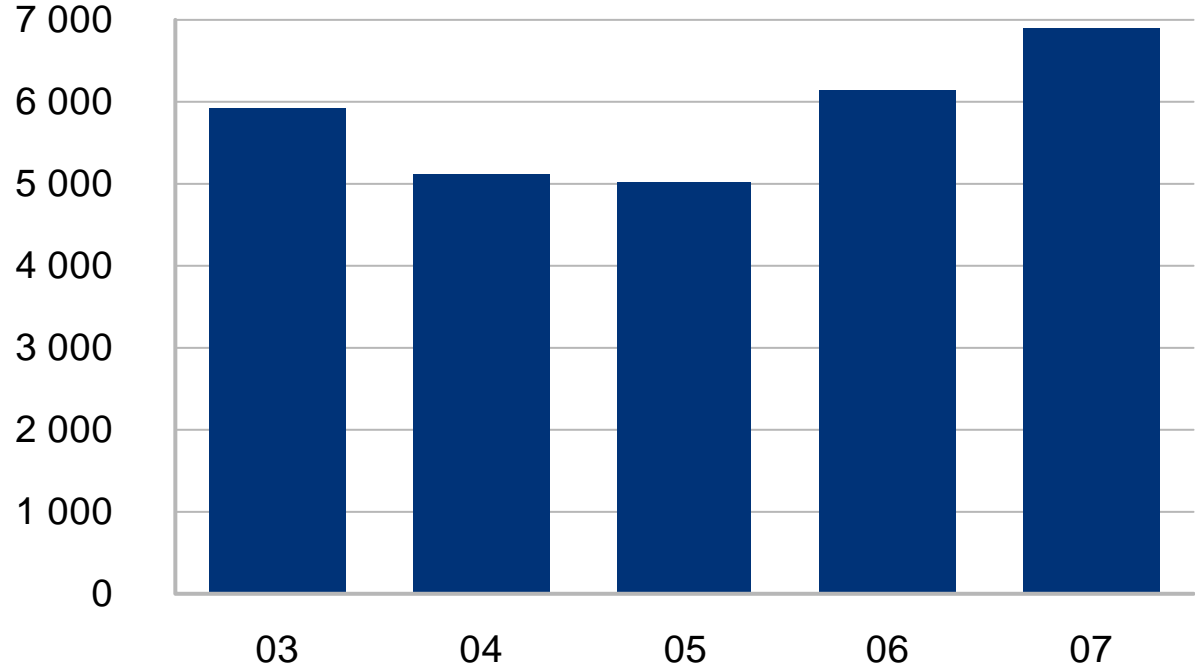
**Metal prices**

**Share and ownership information**

[www.outokumpu.com](http://www.outokumpu.com)

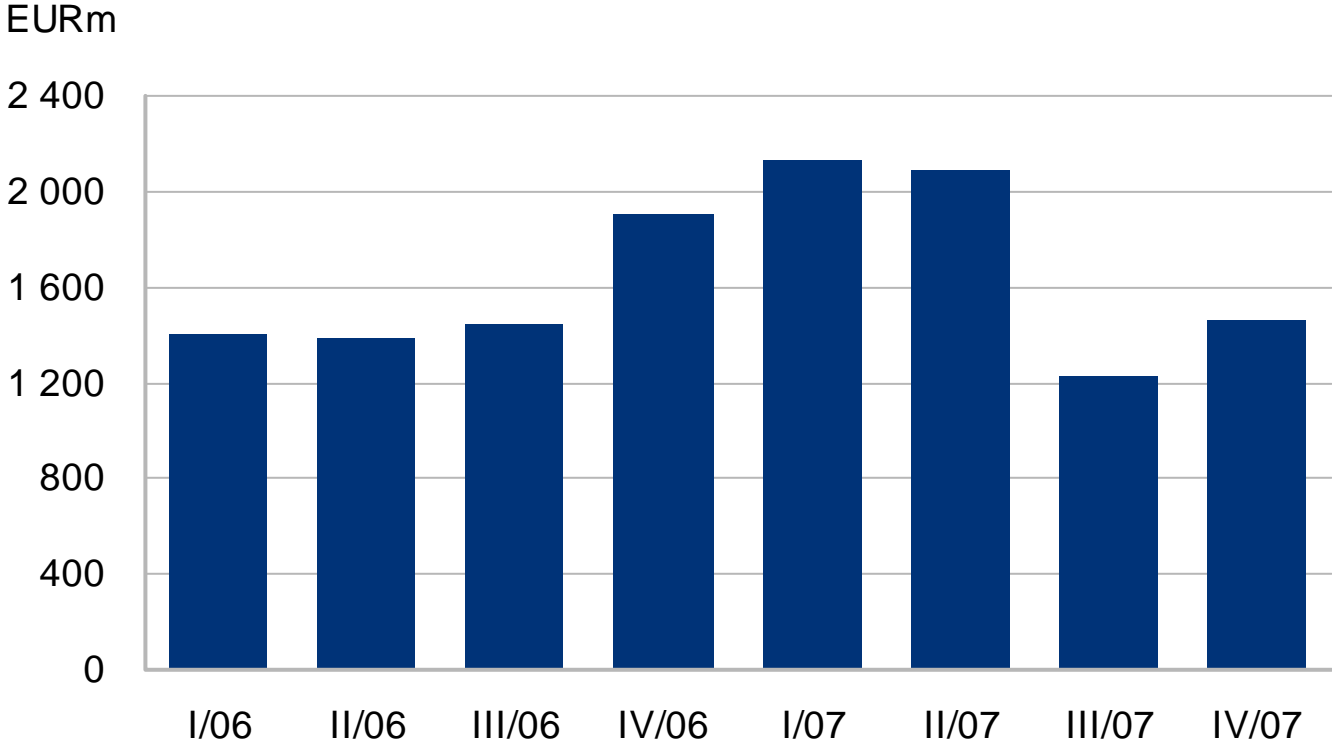
# Sales

EURm

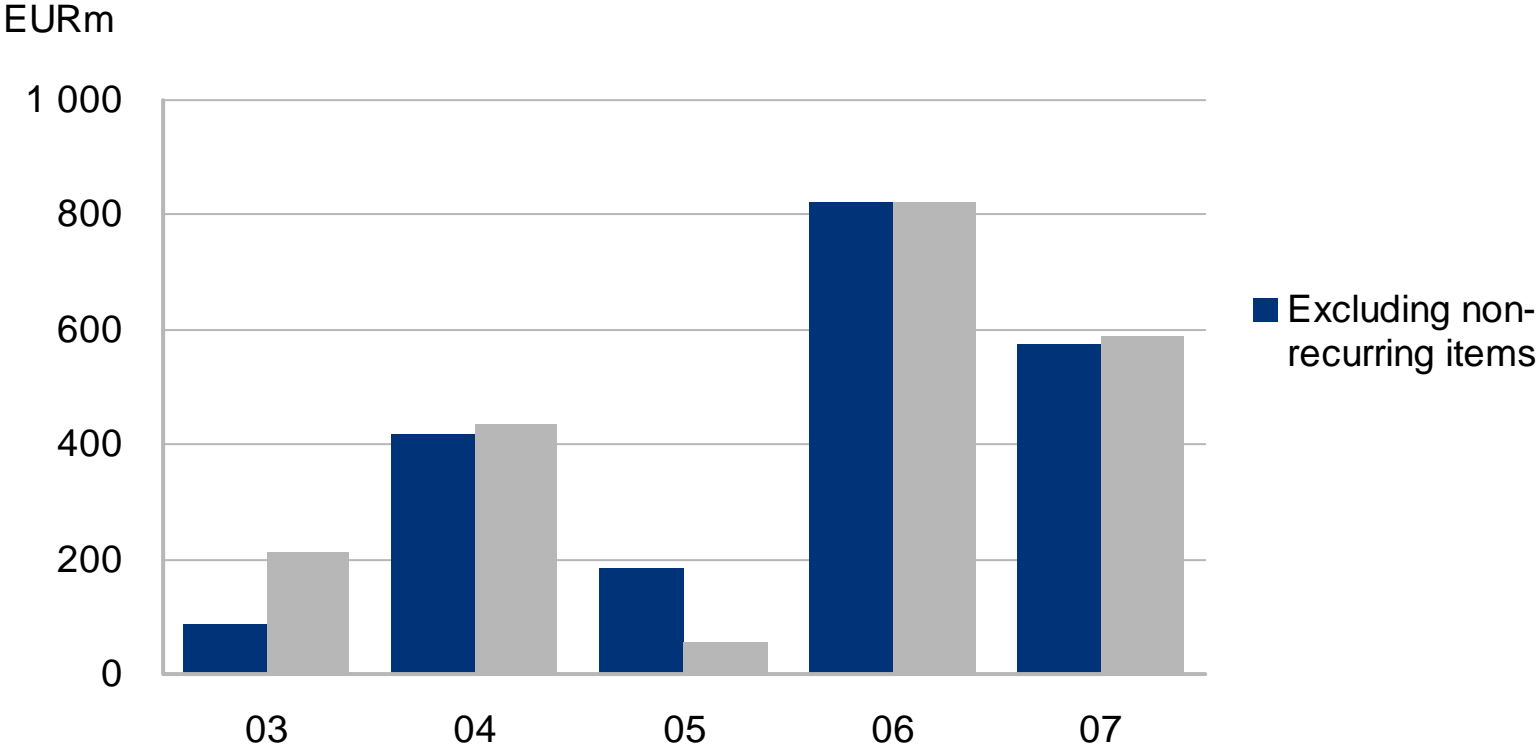


As of 2005 current continuing operations

# Sales by quarter

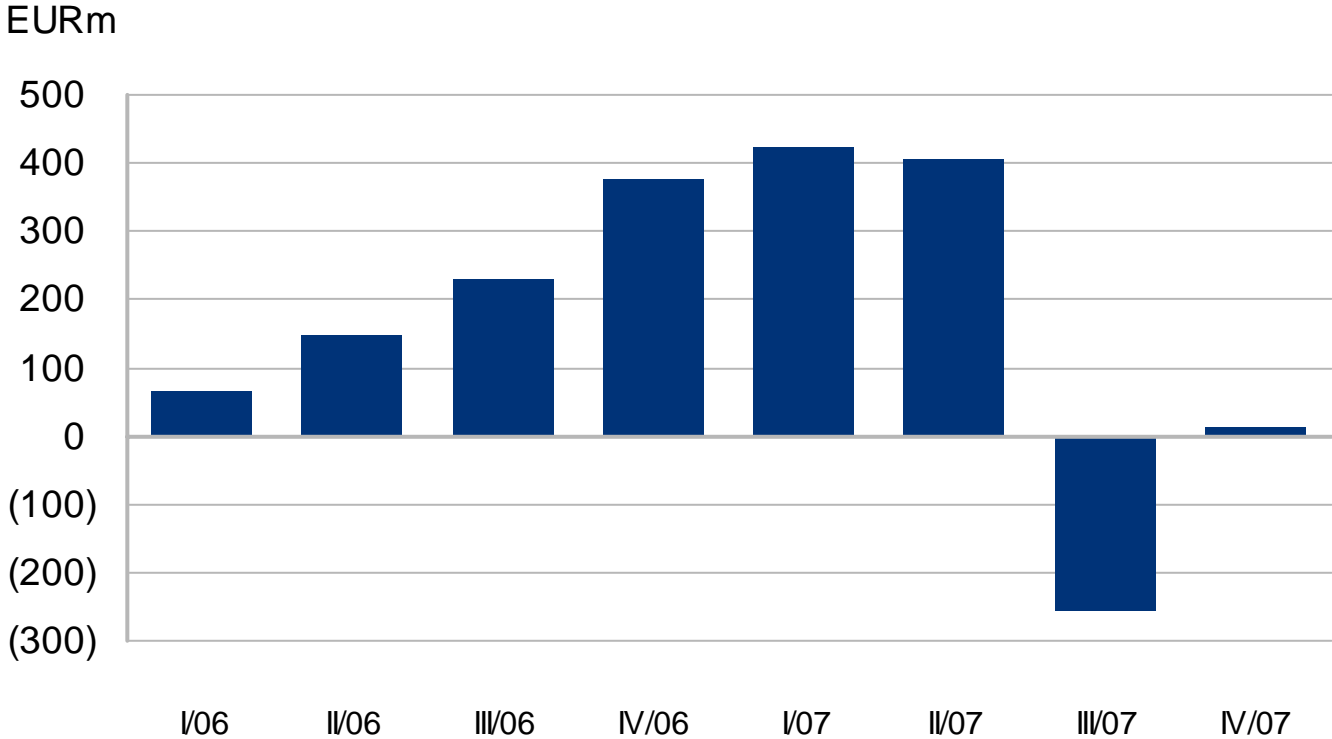


# Operating profit

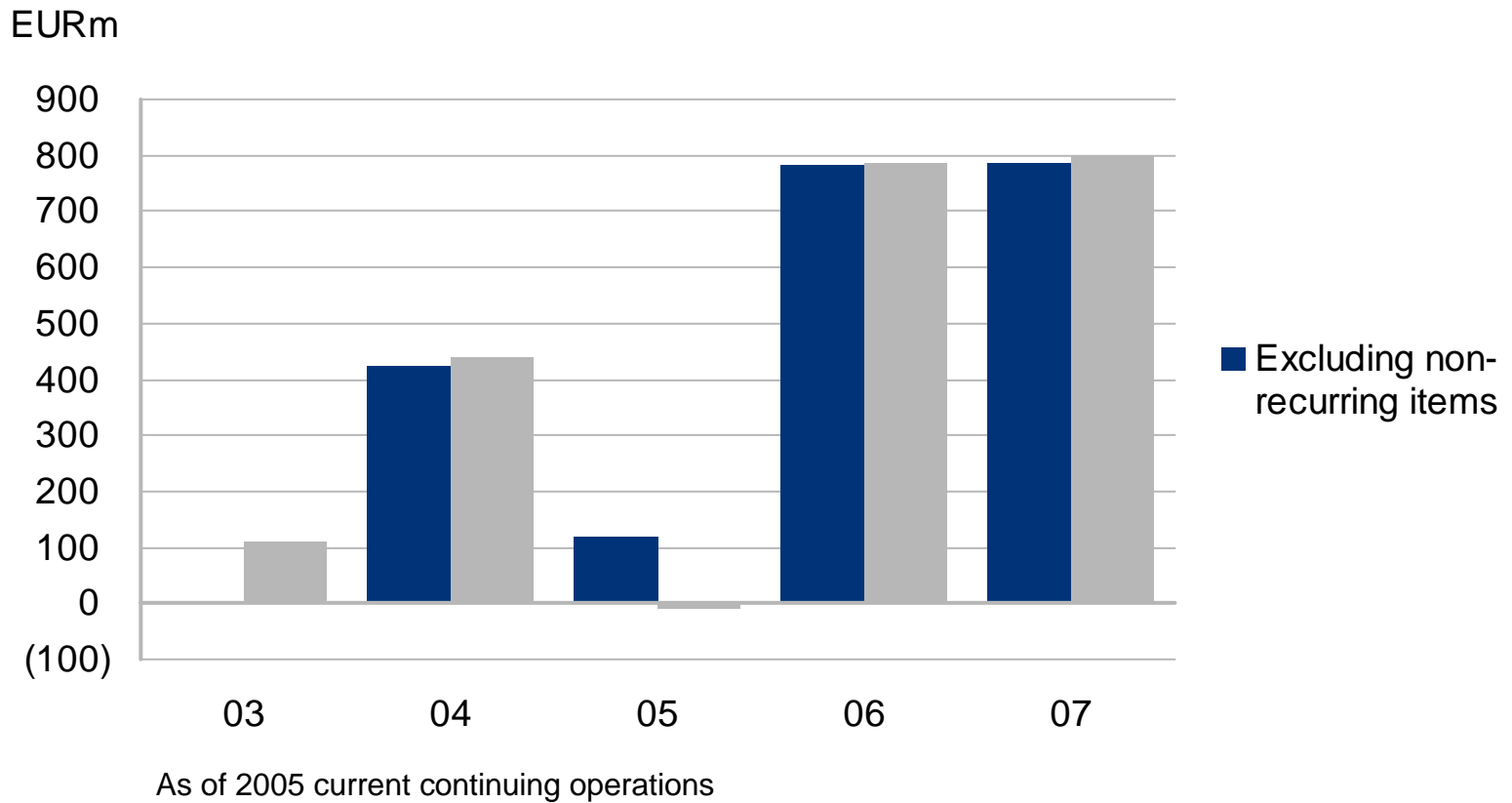


As of 2005 current continuing operations

# Operating profit by quarter

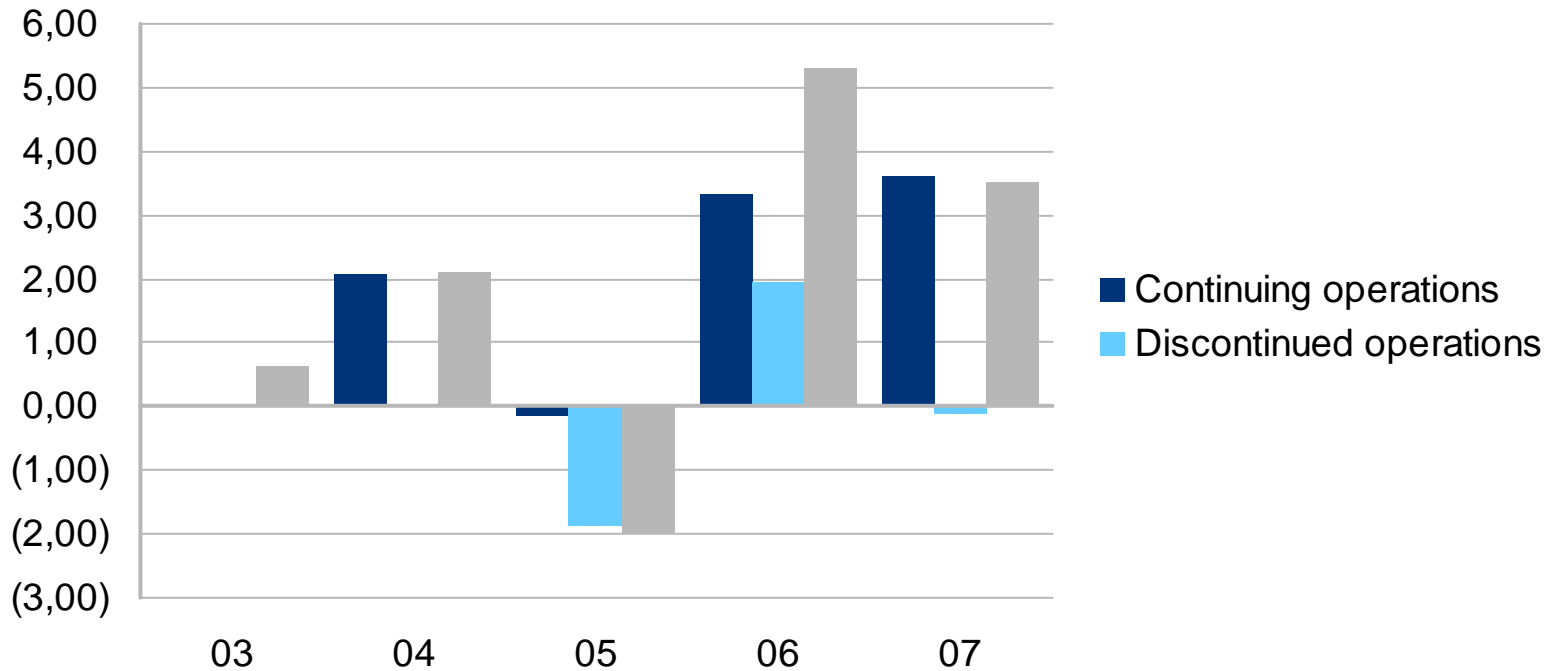


# Profit before taxes



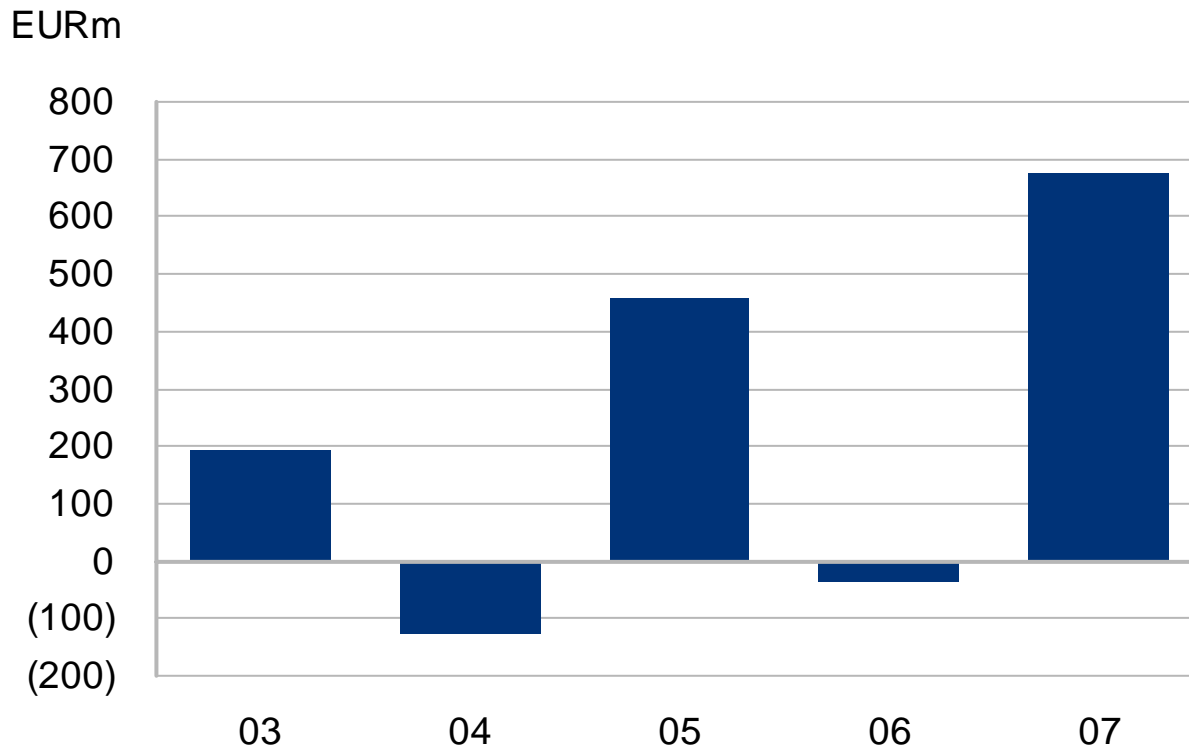
# Earnings per share

EUR

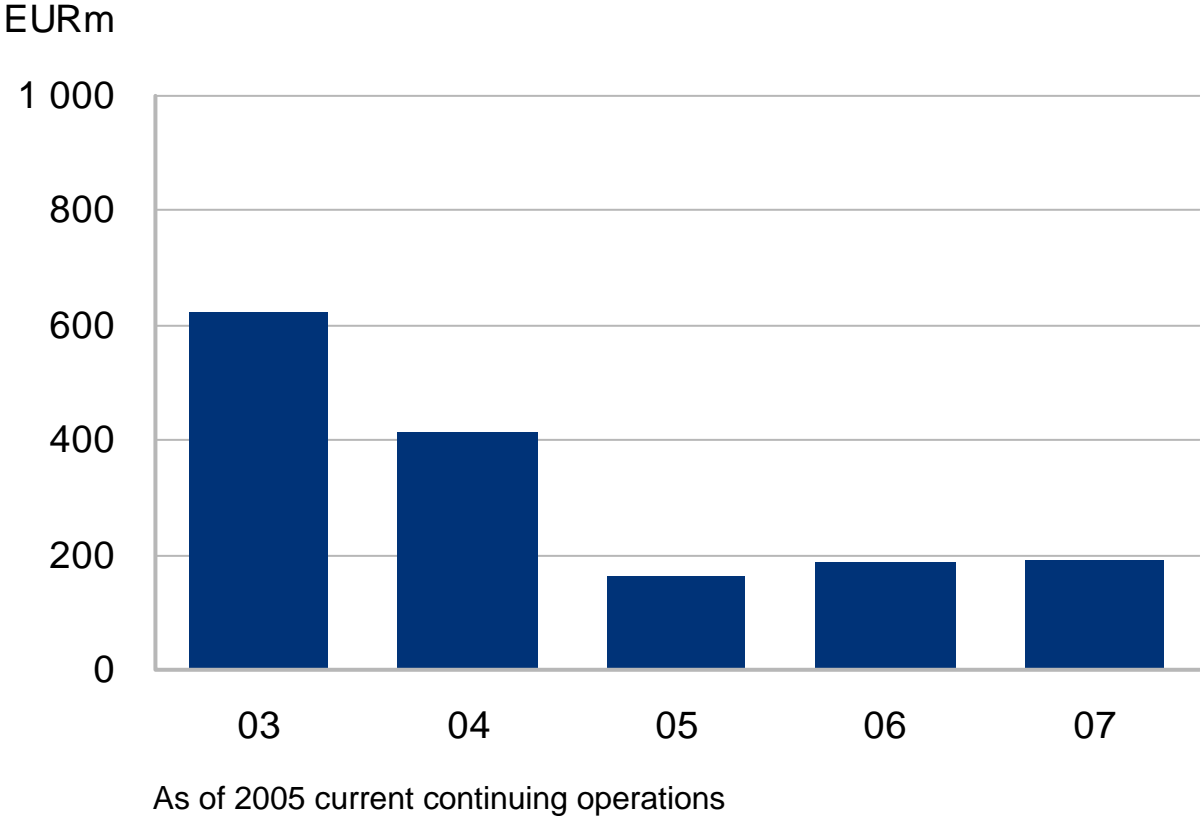


As of 2005 current continuing operations

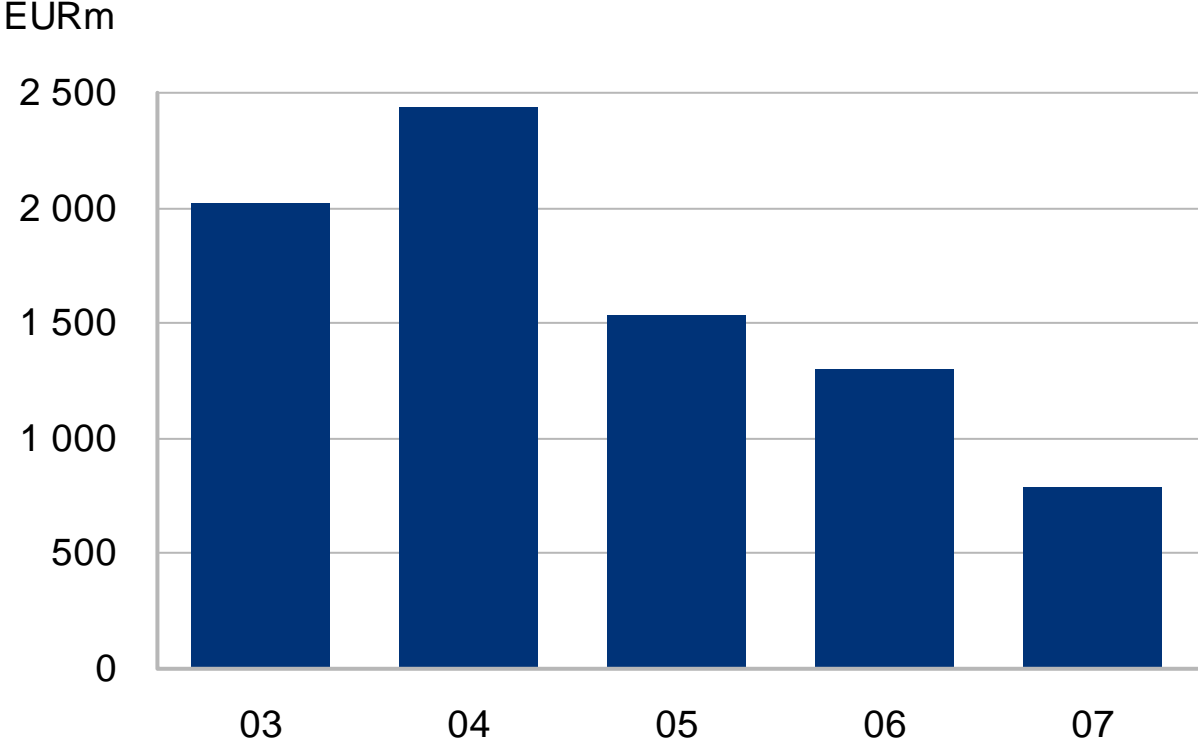
# Net cash generated from operating activities



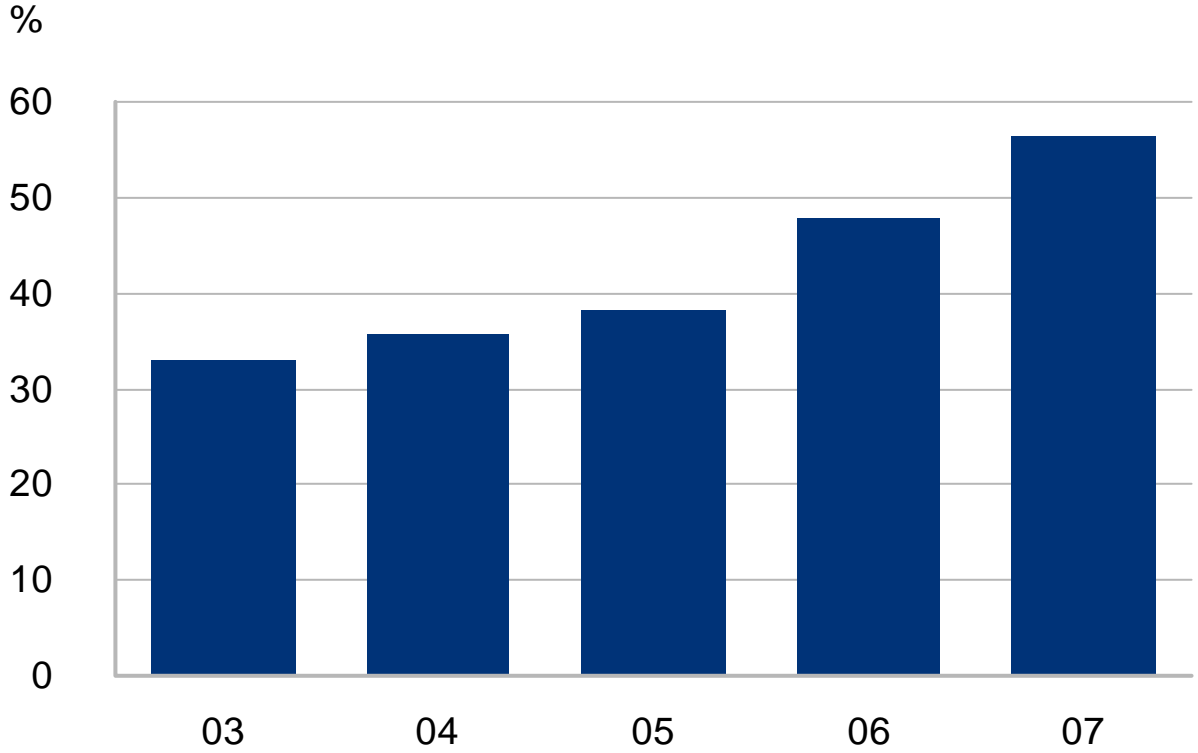
# Capital expenditure



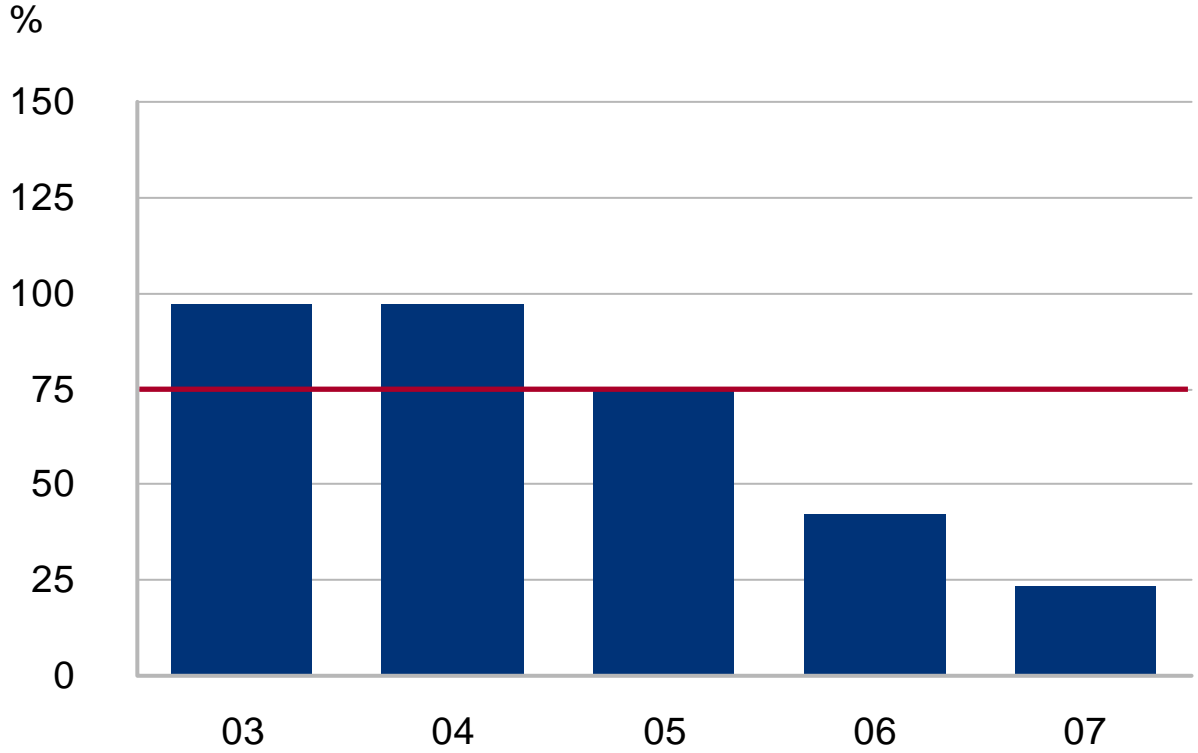
# Net interest-bearing debt



# Equity-to-assets ratio

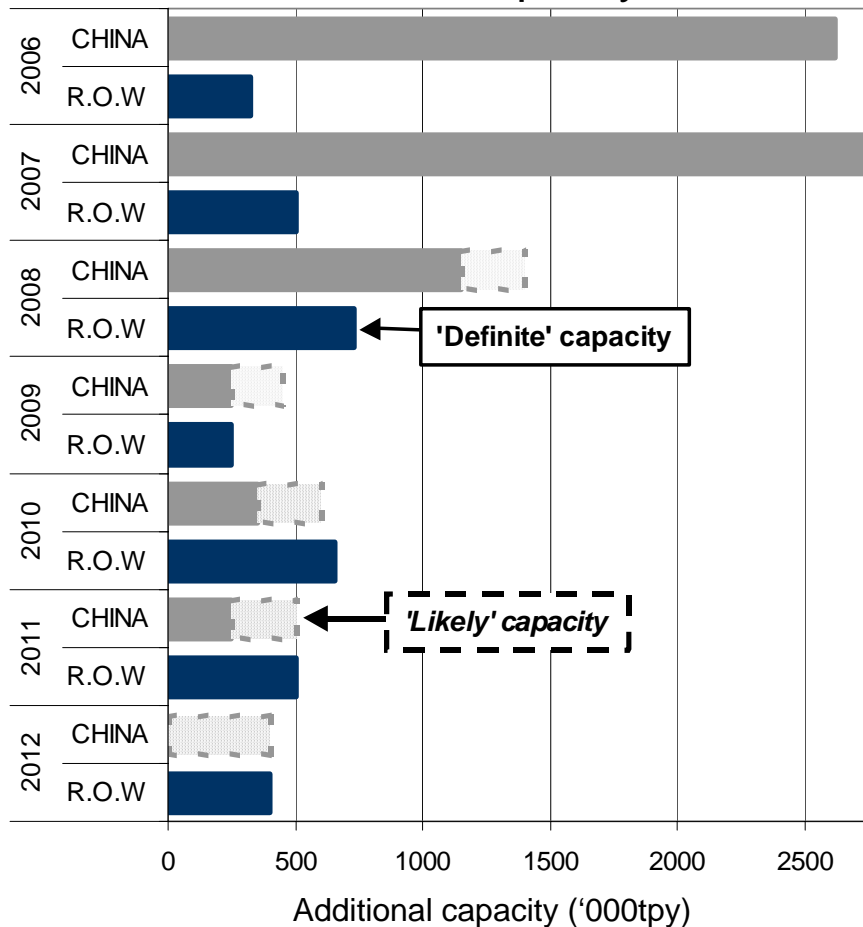


# Debt-to-equity ratio

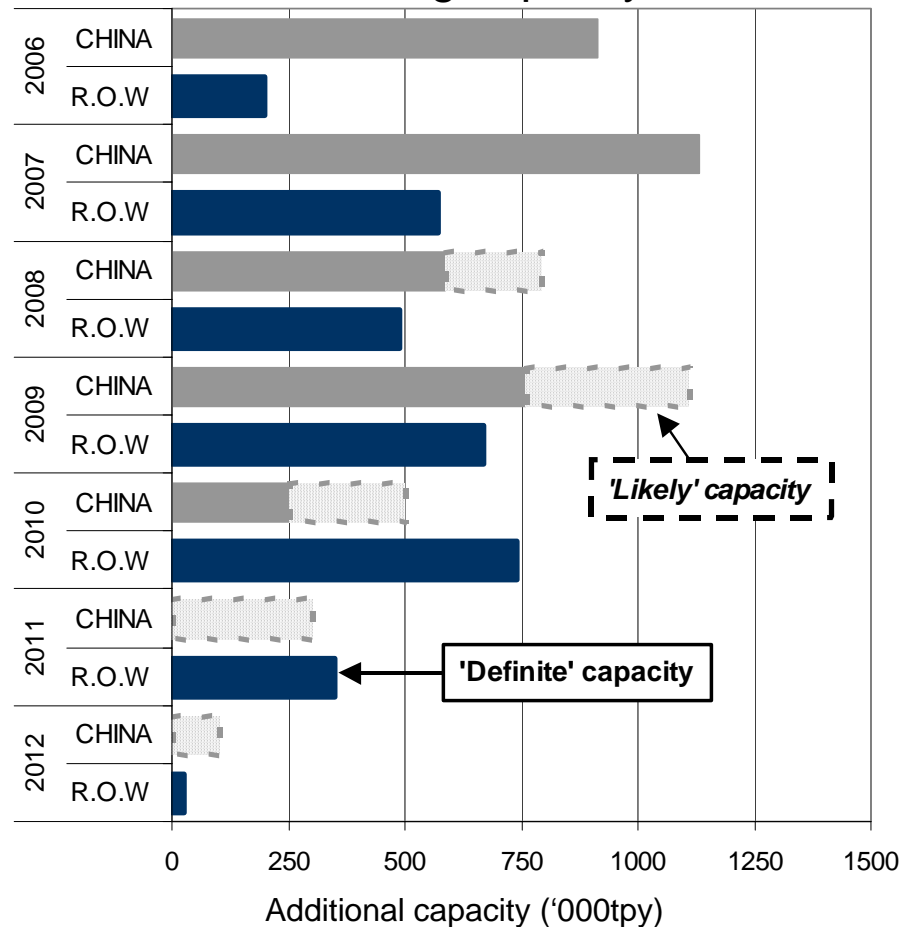


# World stainless planned capacity additions - 'definite' and 'likely'

## Slab capacity



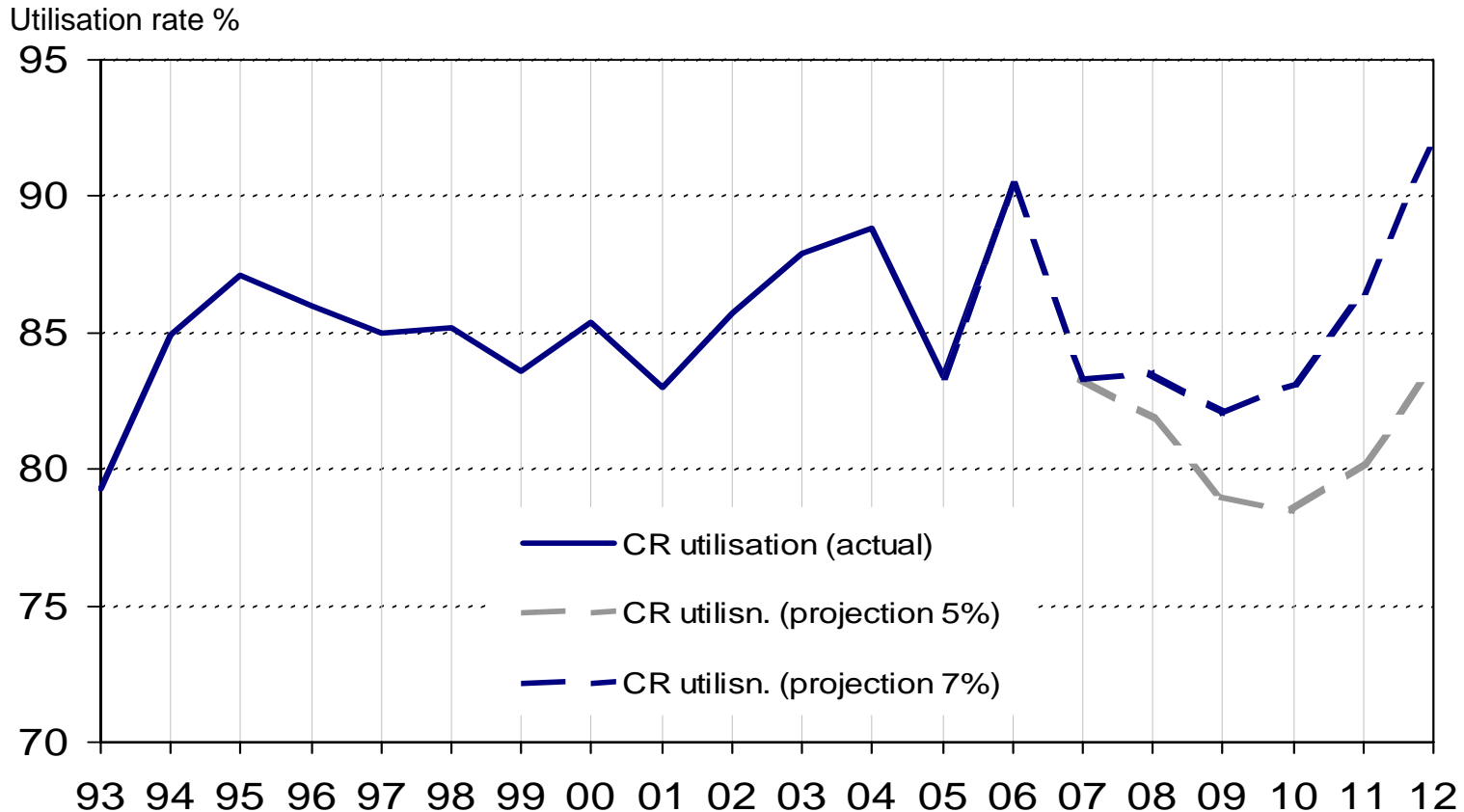
## Cold rolling capacity



Source: Outokumpu, CRU, ISSF, SMR. Data refers to flat products only.

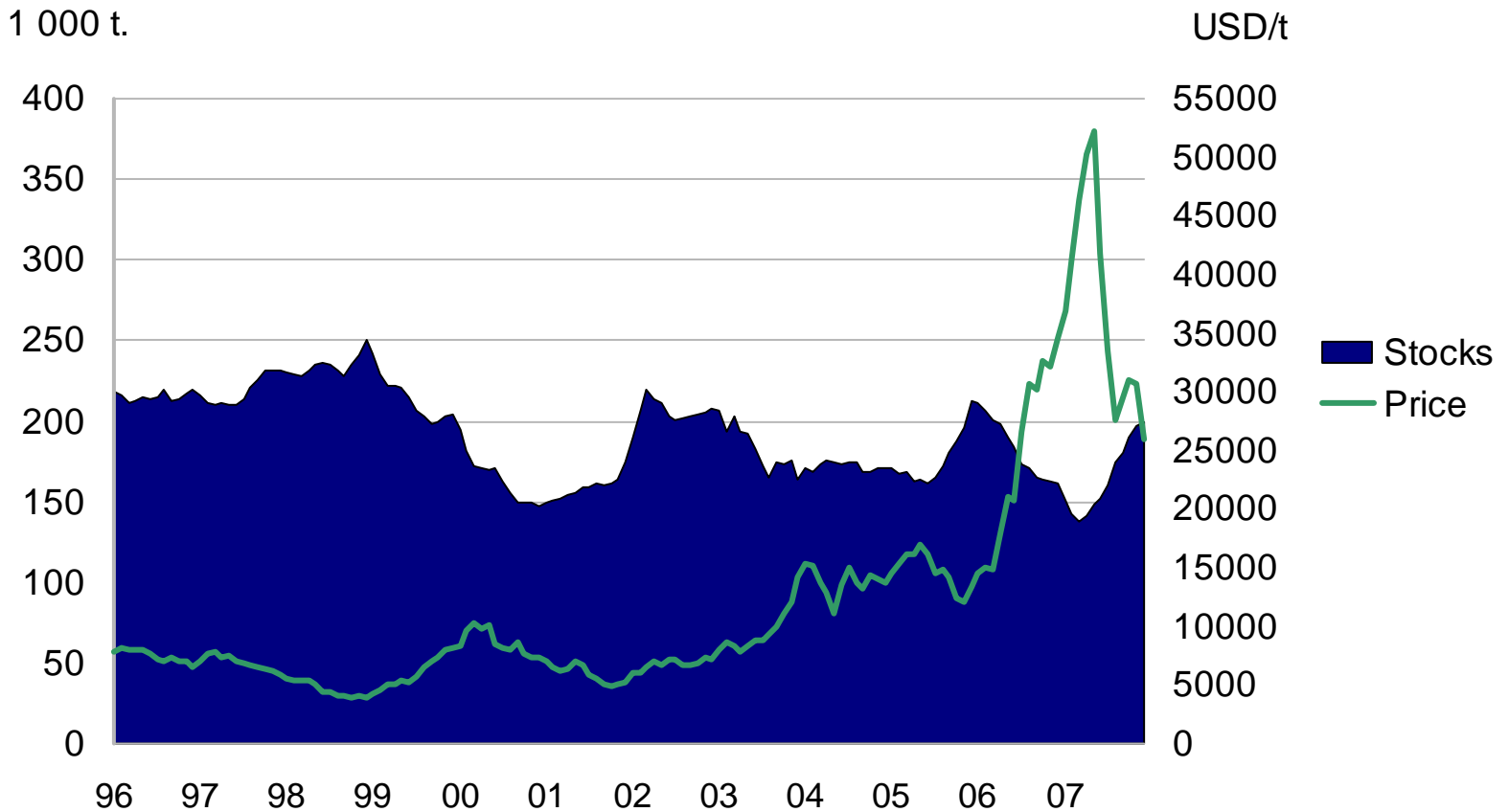
China Rest of World

# Global cold rolling utilization rates



Source: Outokumpu, CRU, ISSF, SMR. 2007 growth in shipments assumed to be 1.2%. 2008-2012 projections based on 5% / 7% growth per year in shipments/production assumption. Capacity data includes both "definite" and "likely" projects

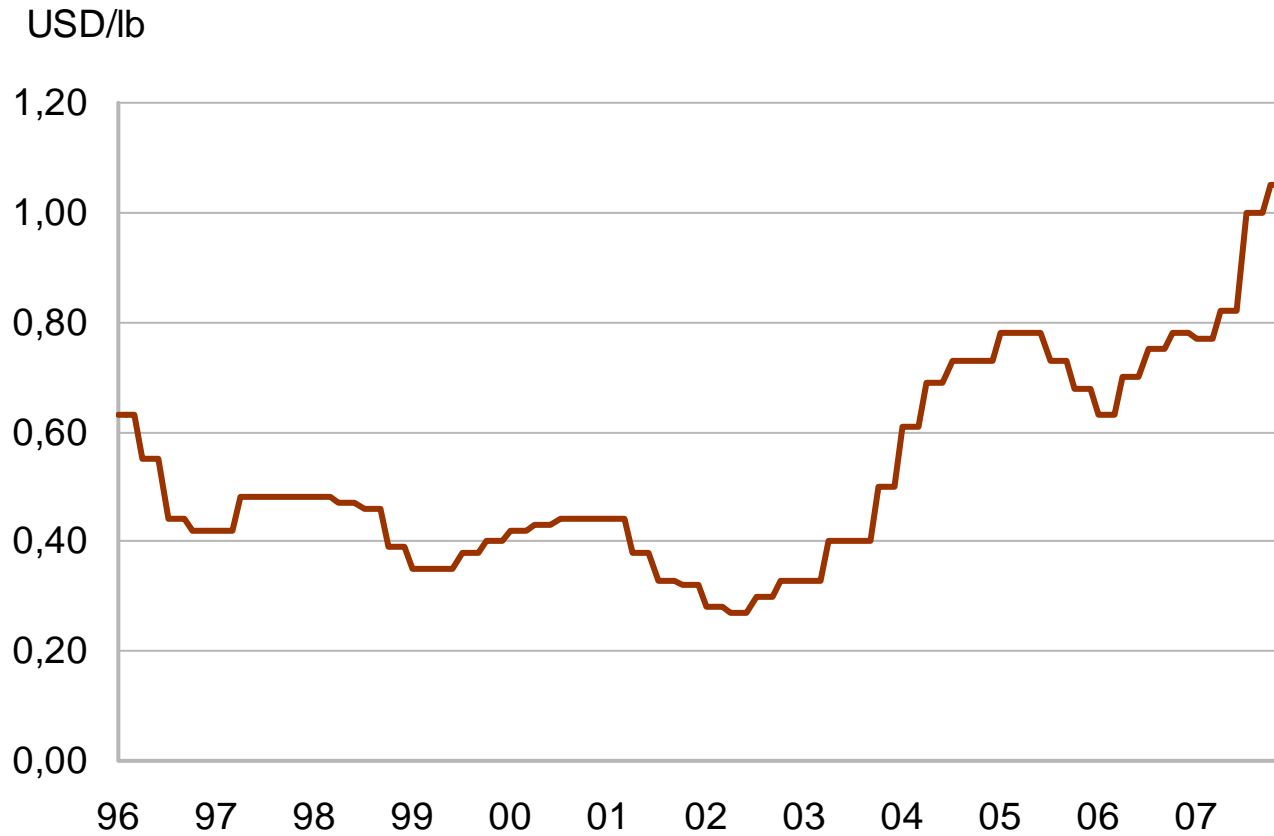
# Nickel price and stocks



December 2007

Source: CRU & LME

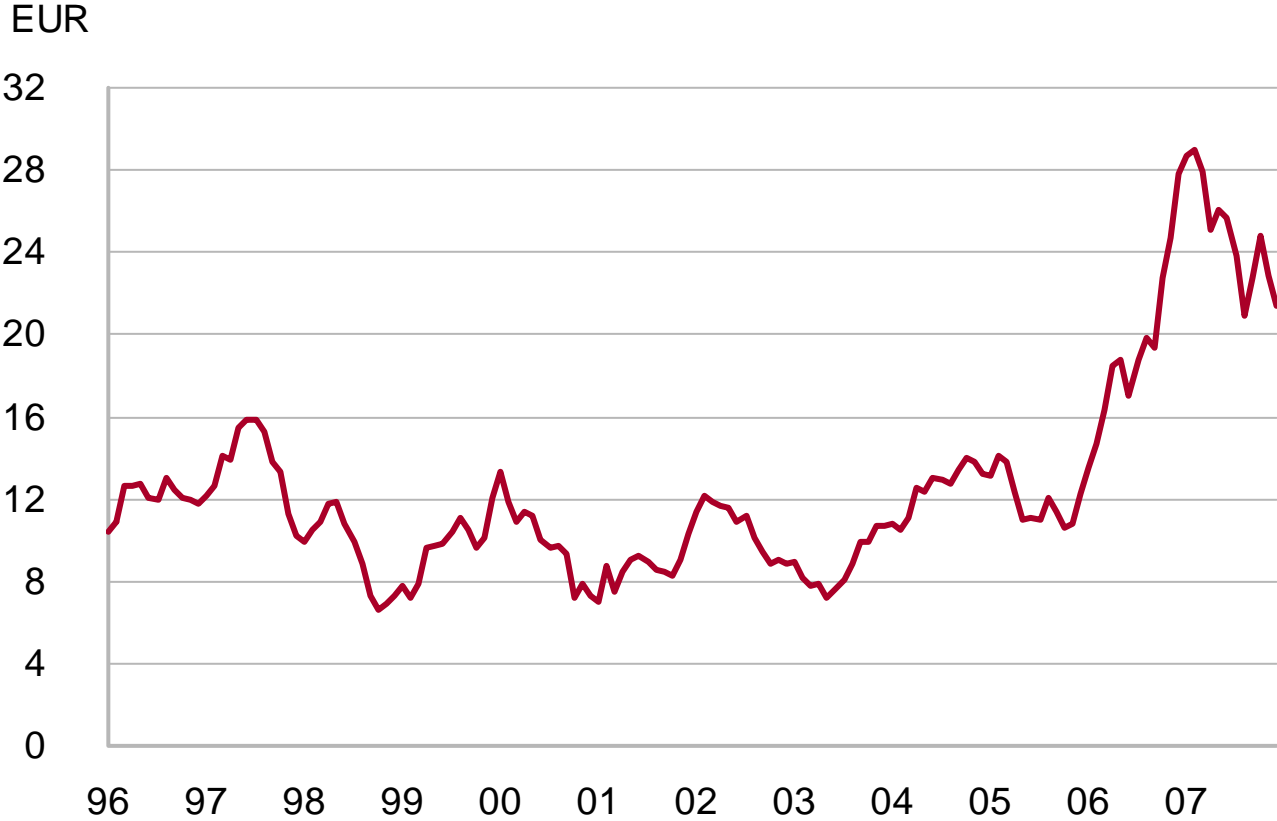
# Ferrochrome price



December 2007

Source: Metal Bulletin

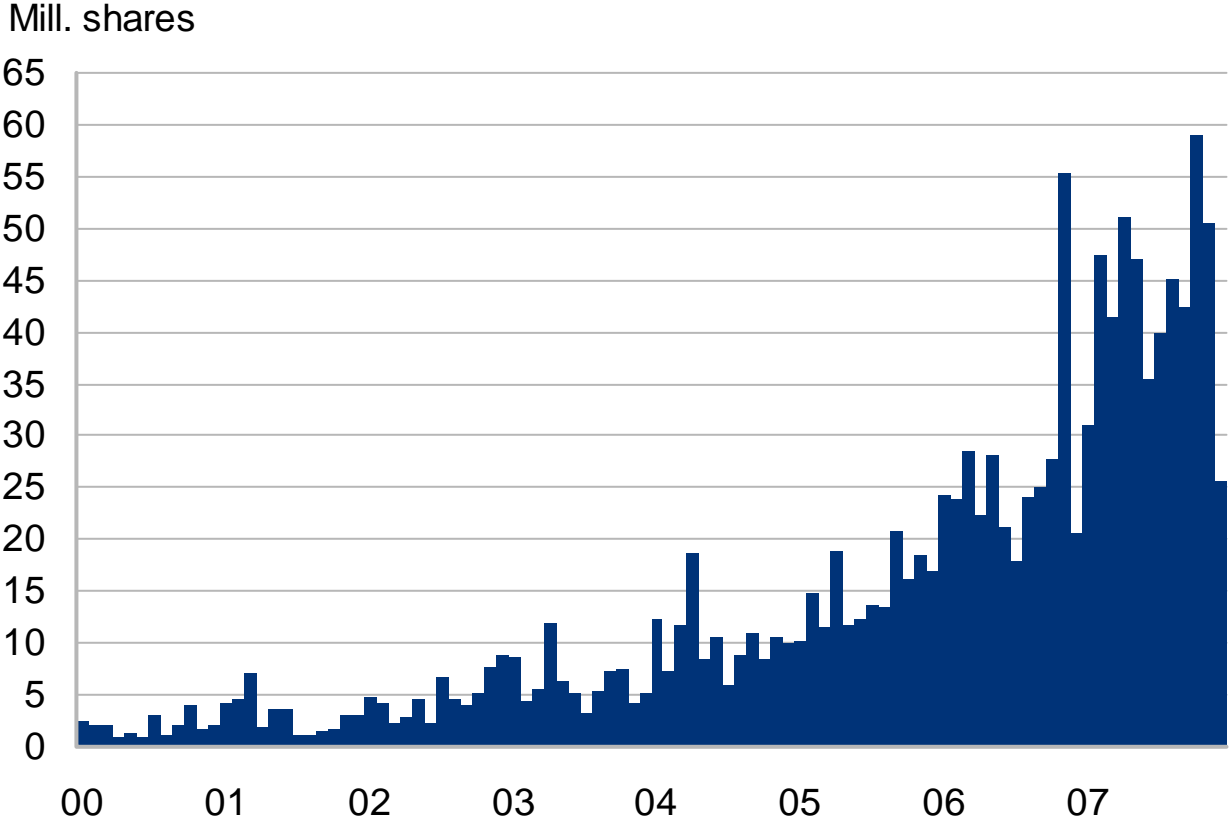
# Share price performance



December 2007

Source: OMX Nordic Exchange Helsinki

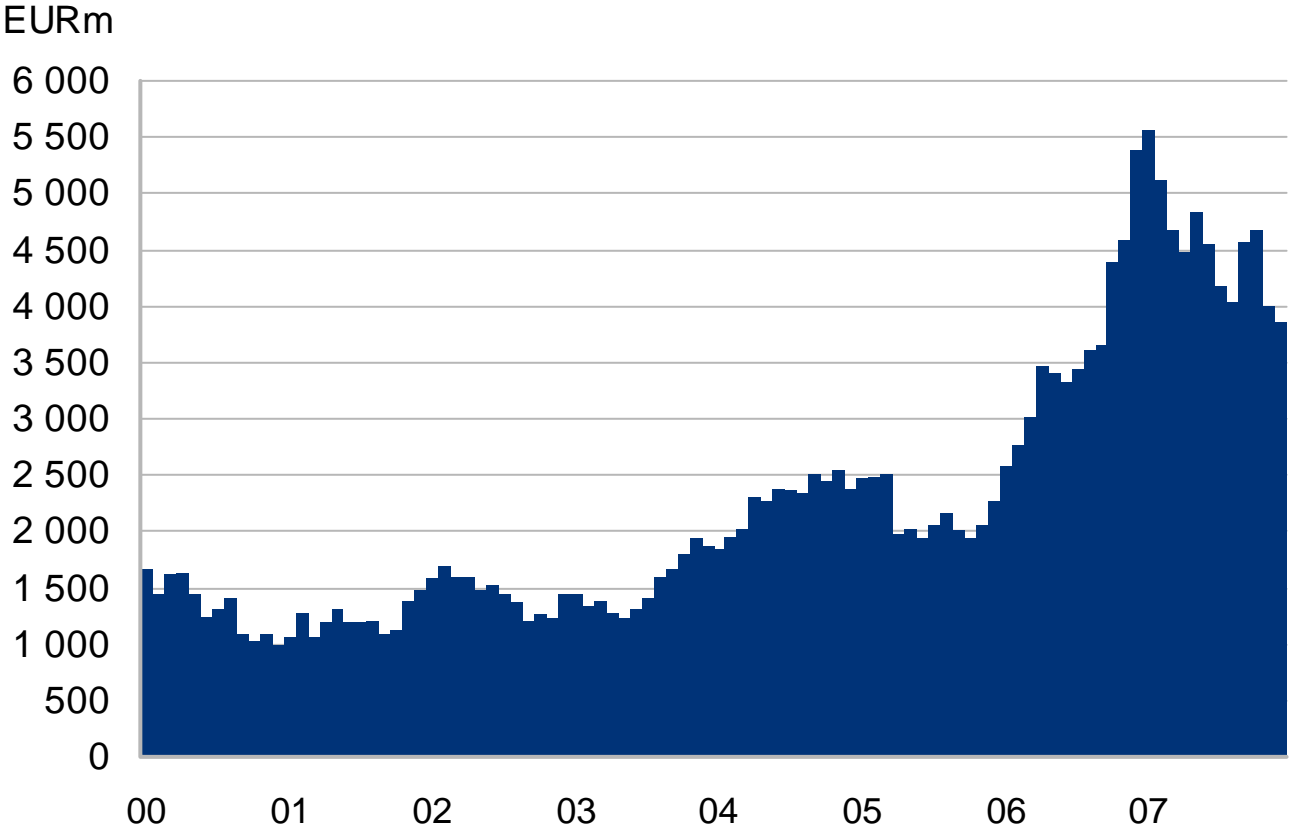
# Trading volume of the share



December 2007

Source: OMX Nordic Exchange Helsinki

# Market capitalization



December 2007

Source: OMX Nordic Exchange Helsinki



# Ownership structure

on December 31, 2007

